



June 2018 Taxes, Remitted in July 2018 Sales, Use, and Accommodation Tax Report

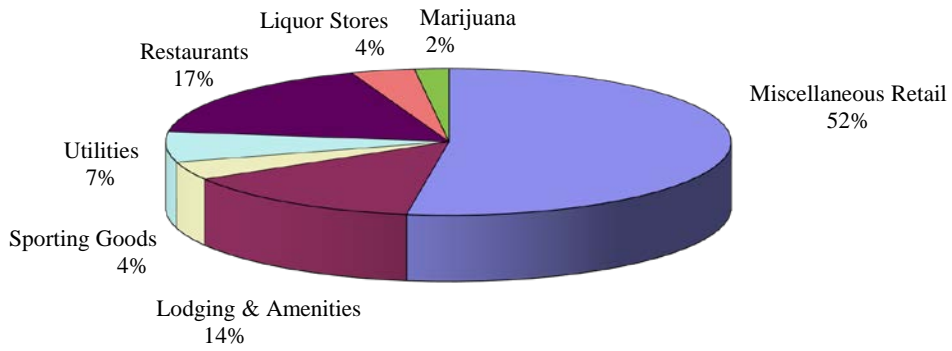
This City of Steamboat Springs Sales, Use, and Accommodation Tax Report examines tax collections for the month of June 2018, which were remitted to the City in July 2018.

Sales Tax

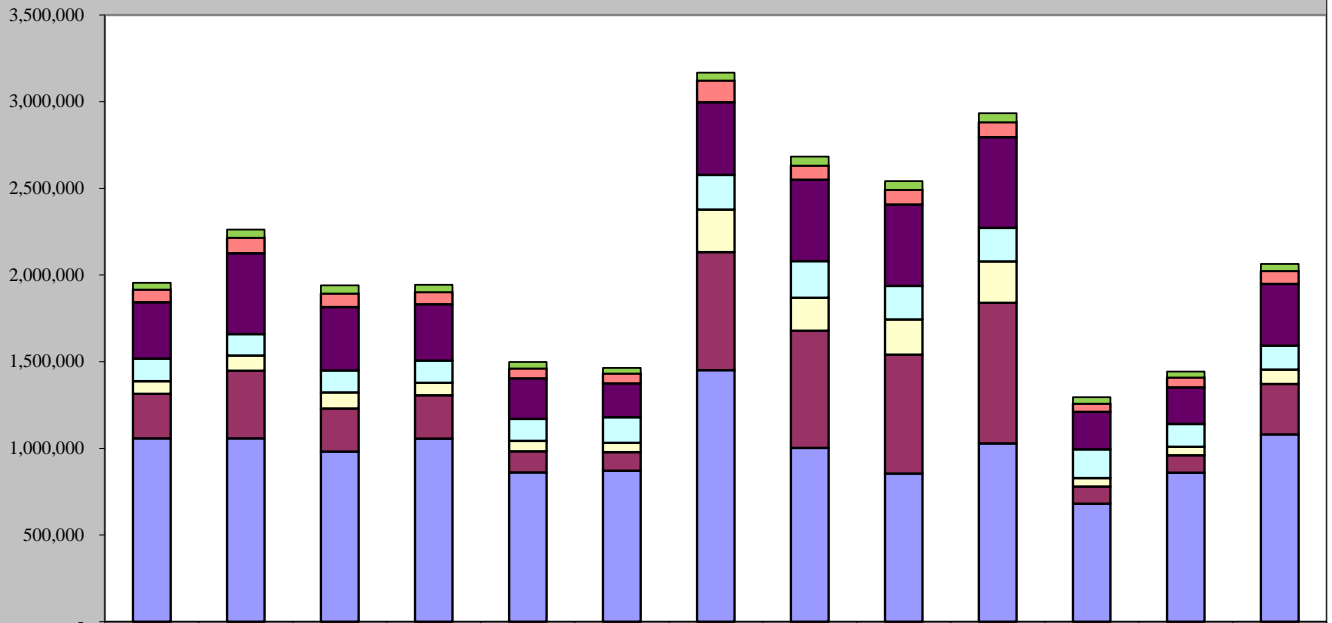
June 2018 sales tax collections increased by 5.56% compared to June 2017.
Year-to-date total sales tax collections are 7.18% higher than those of 2017 year-to-date.

Sales Tax June 2018	Sales Tax June 2017	% increase/decrease over last June
\$2,063,543	\$1,954,784	5.56%
Sales Tax 2018 YTD	Sales Tax 2017 YTD	% increase/decrease over prior Year to Date
\$12,929,975	\$12,063,388	7.18%

June 2018 Sales Categories



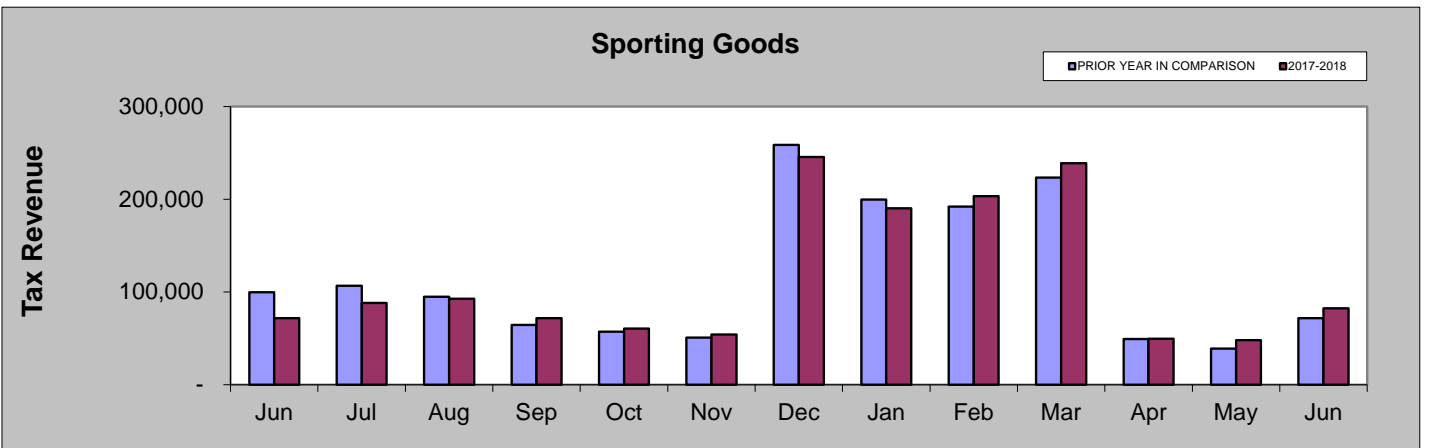
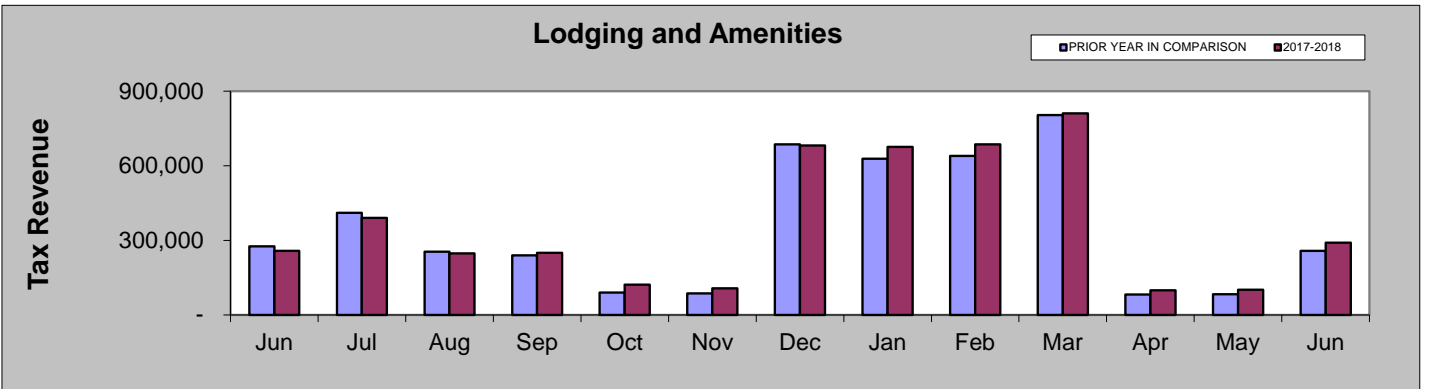
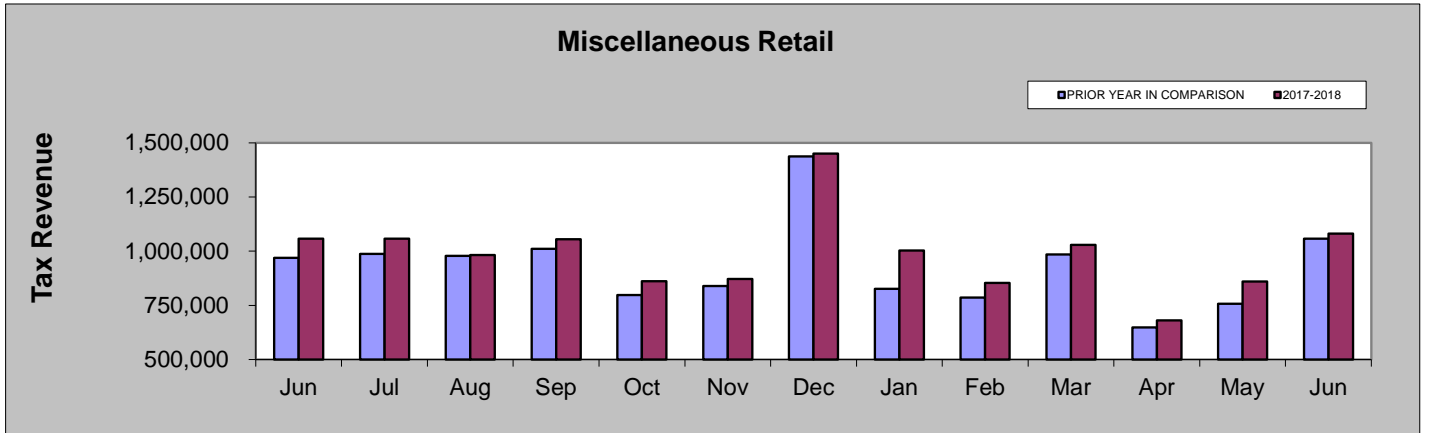
June 2017 - June 2018

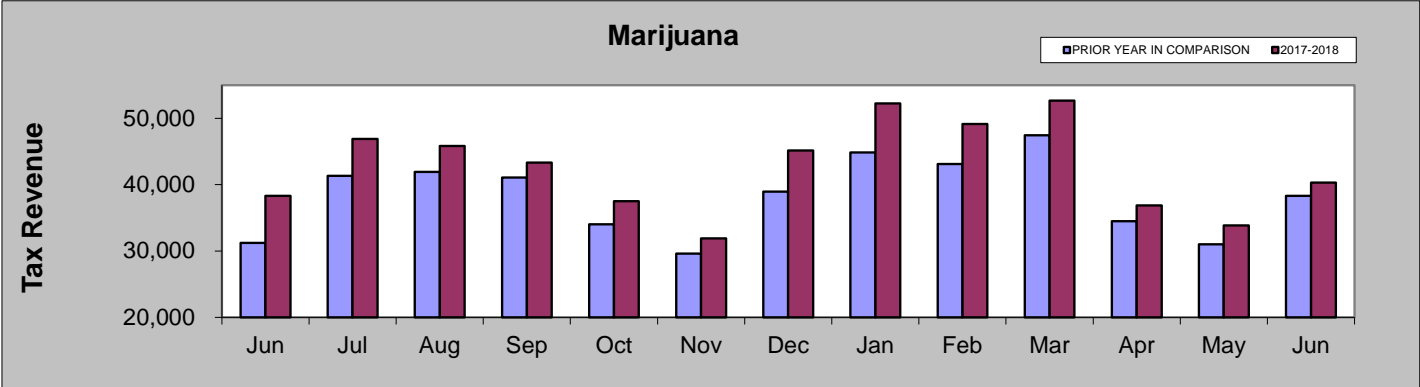
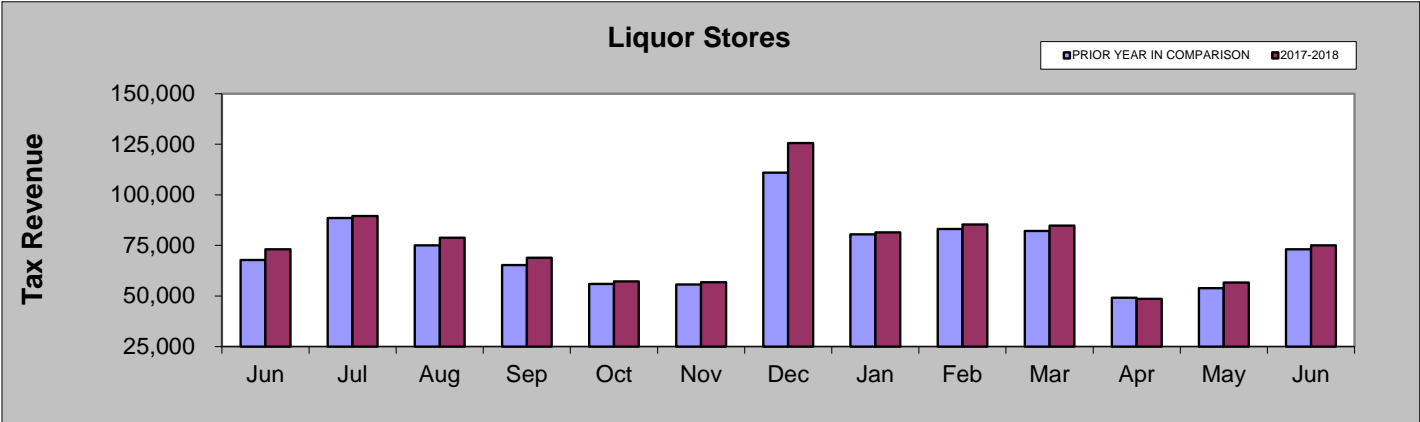
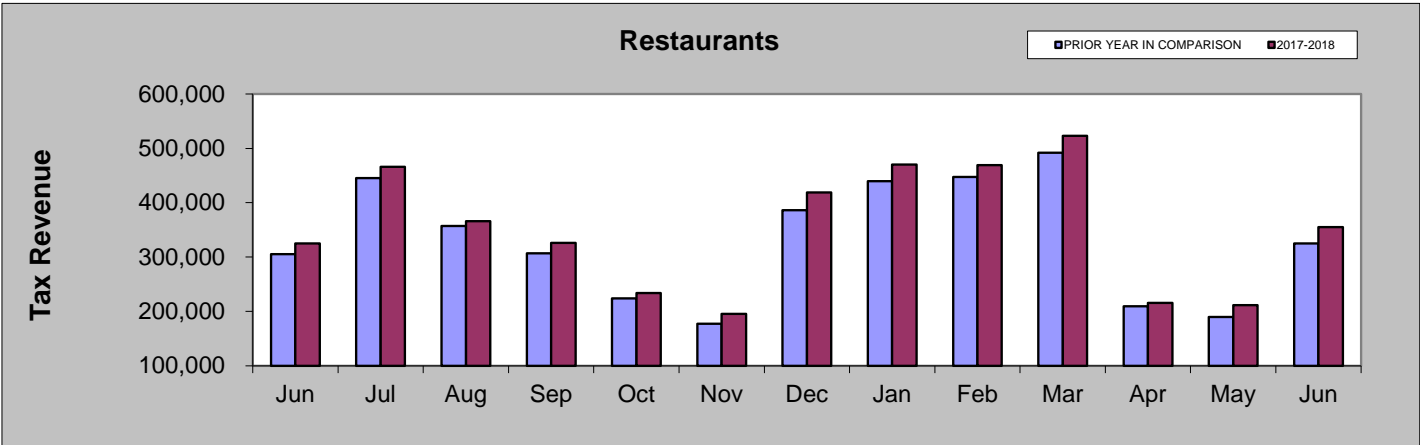
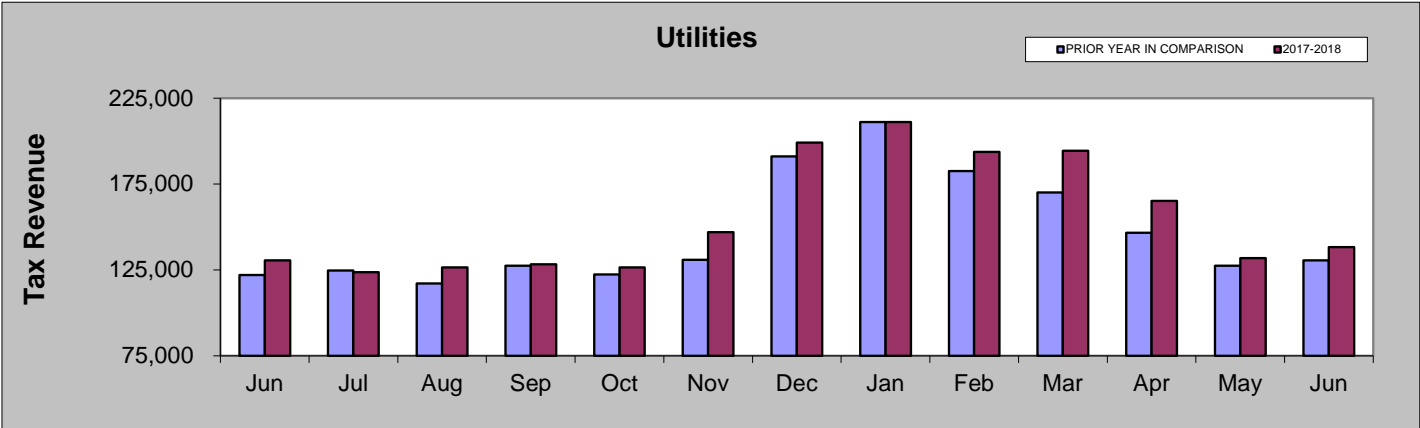


	Jun-17	Jul-17	Aug-17	Sep-17	Oct-17	Nov-17	Dec-17	Jan-18	Feb-18	Mar-18	Apr-18	May-18	Jun-18
Marijuana	38,304	46,910	45,817	43,327	37,495	31,913	45,146	52,255	49,156	52,692	36,874	33,858	40,297
Liquor Stores	73,163	89,541	78,774	68,892	57,191	56,771	125,660	81,482	85,379	84,750	48,539	56,618	75,125
Restaurants	325,368	466,212	365,998	326,063	234,045	195,335	418,664	470,029	469,019	523,314	215,620	211,651	355,317
Utilities	130,637	123,752	126,523	128,255	126,553	146,984	199,225	211,089	193,675	194,405	165,245	131,974	138,357
Sporting Goods	71,810	88,270	92,697	71,883	60,651	54,083	245,694	190,312	203,449	238,925	49,575	47,958	82,489
Lodging & Amenities	258,158	389,856	247,759	250,397	121,391	107,146	681,684	675,506	686,431	810,401	99,360	100,981	290,924
Miscellaneous Retail	1,057,345	1,057,465	982,301	1,055,456	861,017	871,367	1,450,946	1,002,892	854,093	1,028,994	680,068	859,862	1,081,031

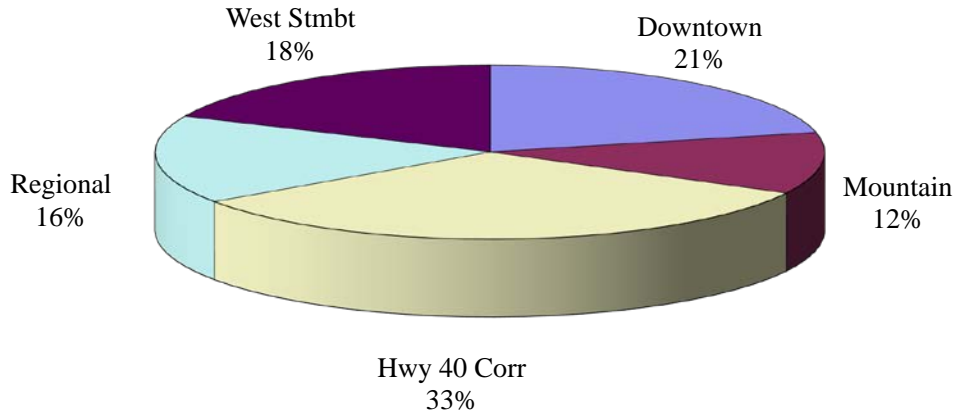
JUNE COMPARISON BY CATEGORY

	2018	2017	% change
Miscellaneous Retail	\$1,081,031	\$1,057,345	2.24%
Lodging and Amenities	\$290,924	\$258,158	12.69%
Sporting Goods	\$82,489	\$71,810	14.87%
Utilities	\$138,357	\$130,637	5.91%
Restaurants	\$355,317	\$325,368	9.20%
Liquor Stores	\$75,125	\$73,163	2.68%
Marijuana	\$40,297	\$38,304	5.20%

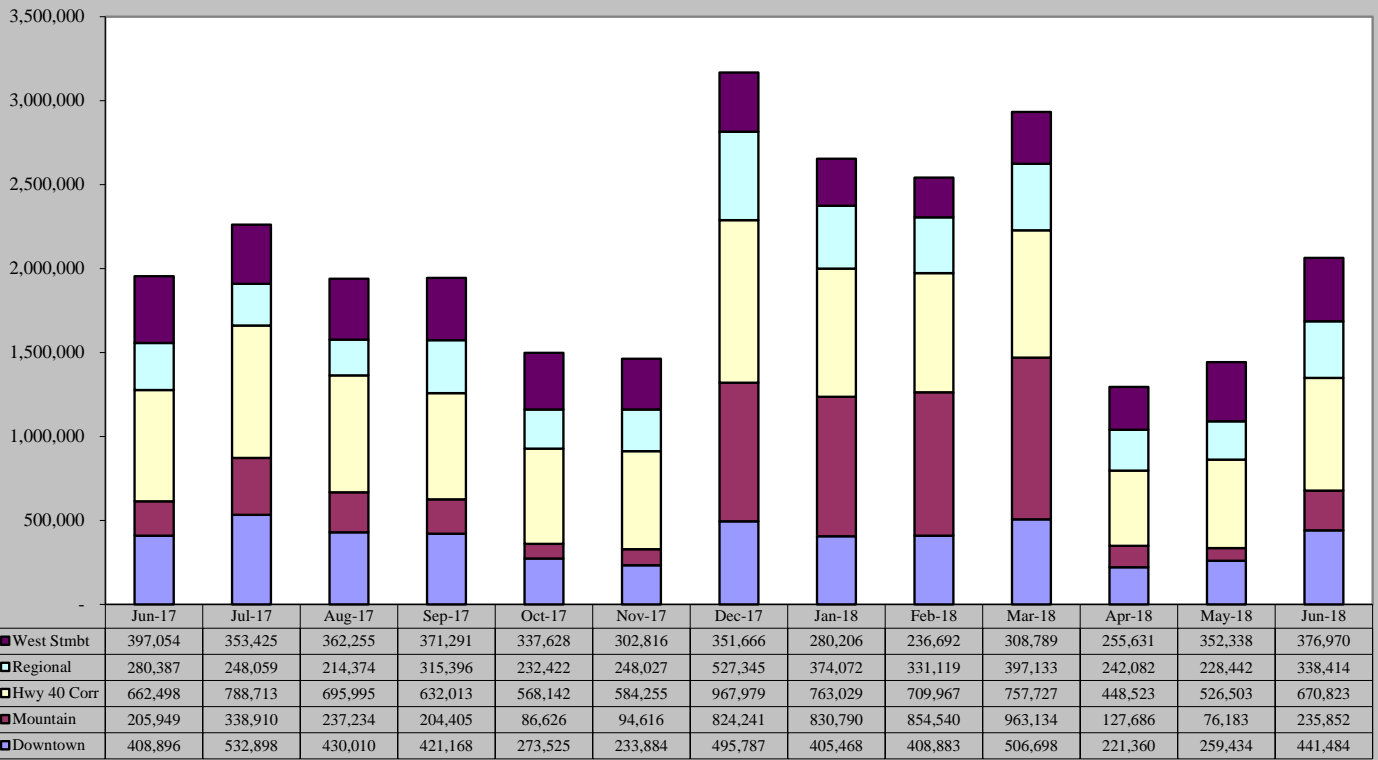




June 2018 Sales Tax By Area

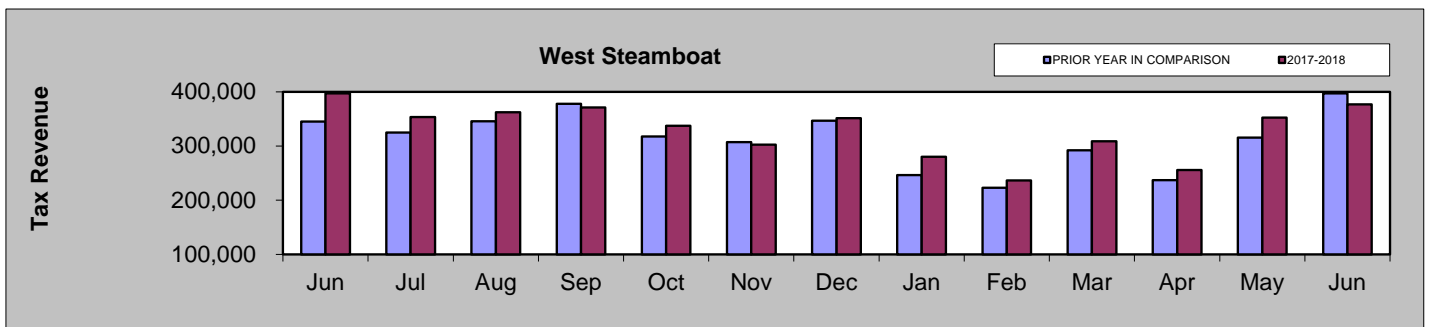
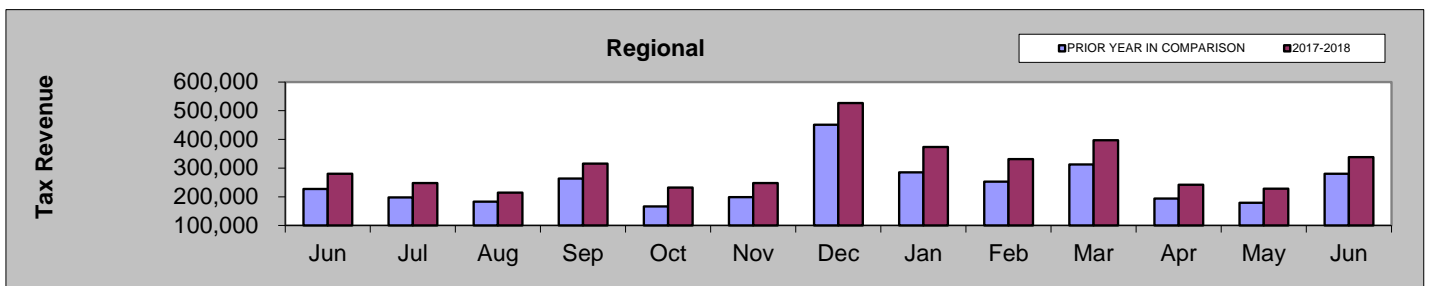
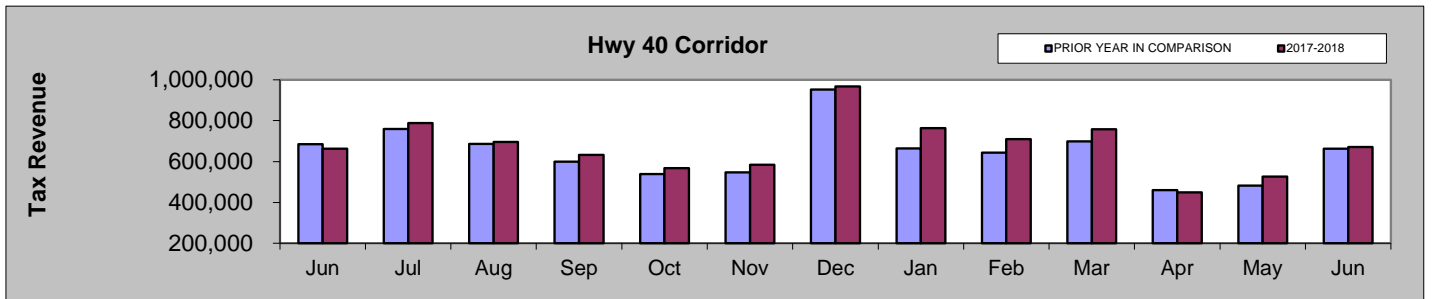
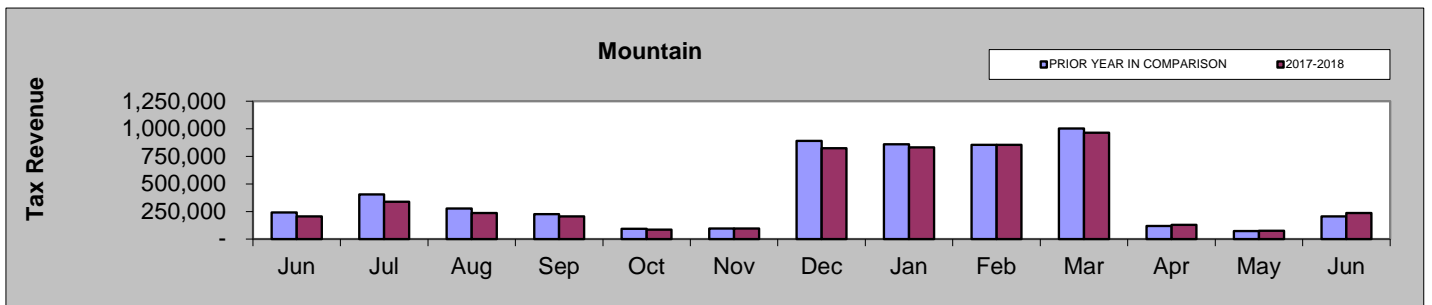
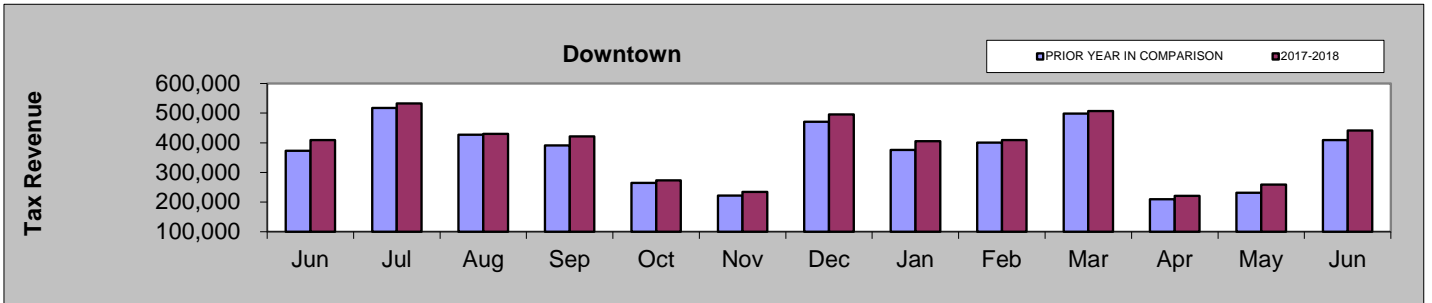


June 2017 - June 2018



JUNE COMPARISON BY AREA

Area	2018	2017	% change
Downtown	\$441,484	\$408,896	7.97%
Mountain	\$235,852	\$205,949	14.52%
Hwy 40 Corridor	\$670,823	\$662,498	1.26%
Regional	\$338,414	\$280,387	20.70%
West Steamboat	\$376,970	\$397,054	-5.06%



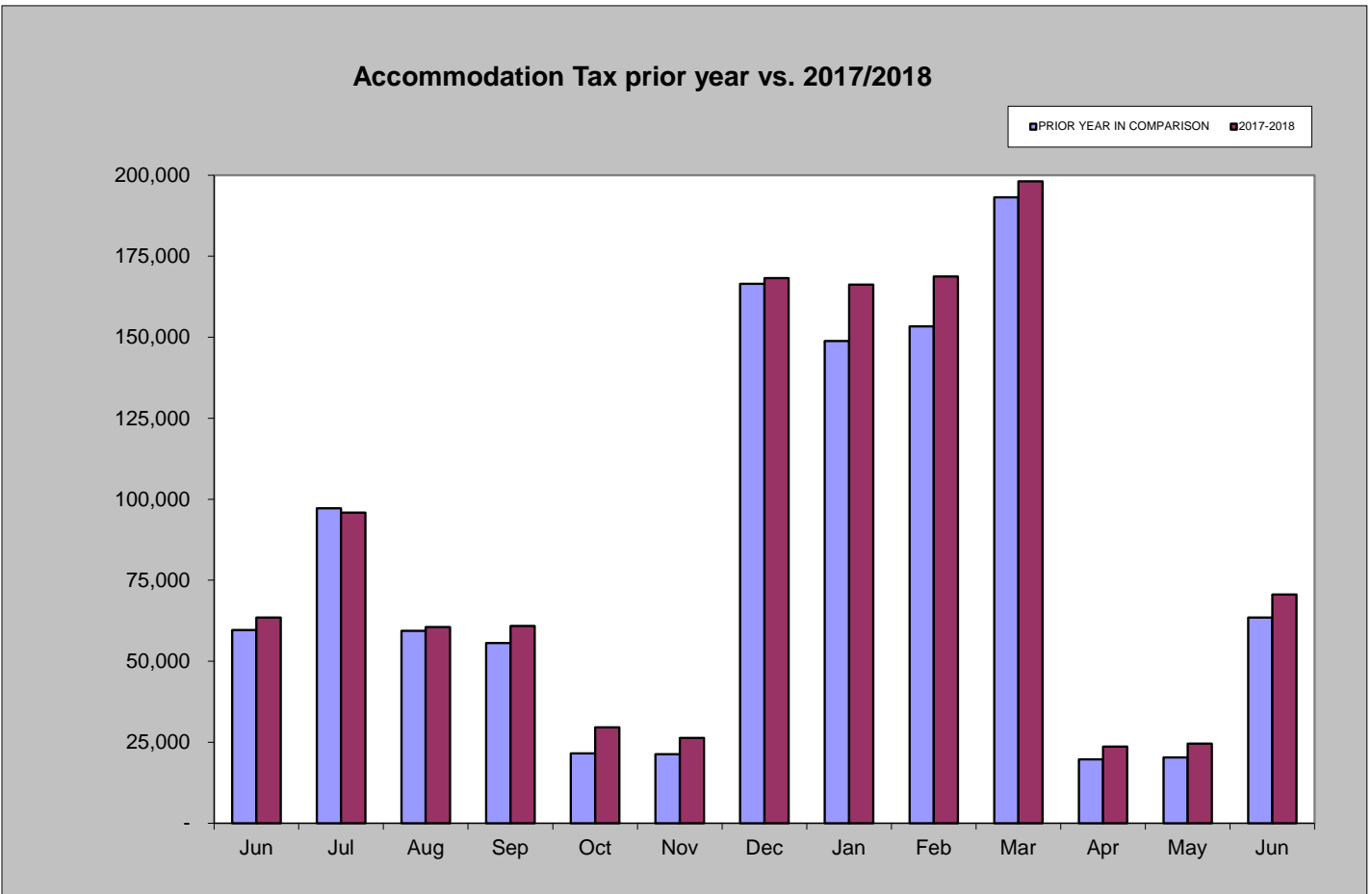
Accommodation Tax

June 2018 accommodation tax collections increased by 11.19% compared to June 2017.

Year-to-date accommodation tax collections are 8.87% higher than those of 2017 year-to-date.

Accommodation Tax June 2018	Accommodation Tax June 2017	% increase/decrease over last June
\$70,596	\$63,490	11.19%

Accommodation Tax 2018 YTD	Accommodation Tax 2017 YTD	% increase/decrease over prior Year to Date
\$651,968	\$598,871	8.87%



Building Use Tax

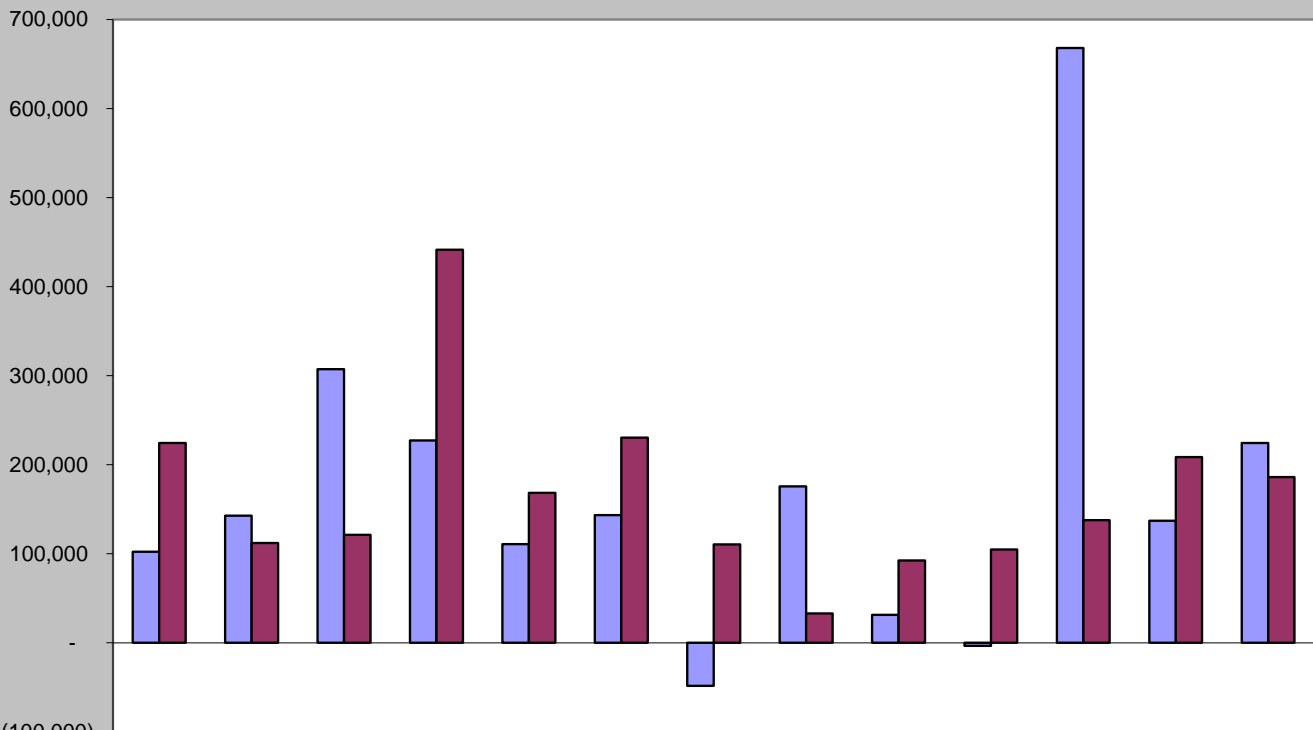
June 2018 building use tax collections were 17% less than June 2017.

Year-to-date building use tax collections are 38% less than those of 2017 year-to-date.

Building Use Tax June 2018	Building Use Tax June 2017	% increase/decrease over last June
\$186,197	\$224,435	-17%

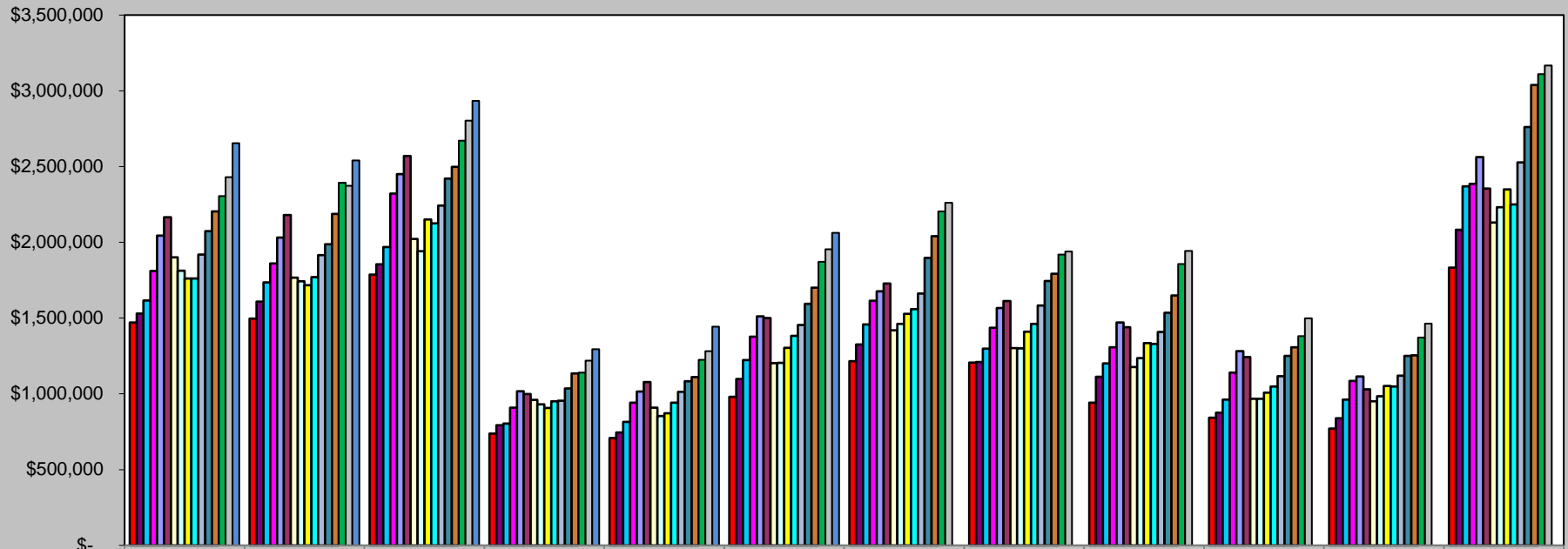
Building Use Tax 2018 YTD	Building Use Tax 2017 YTD	% increase/decrease over prior Year to Date
\$762,859	\$1,233,499	-38%

Building Use Tax - prior year vs. 2017/2018



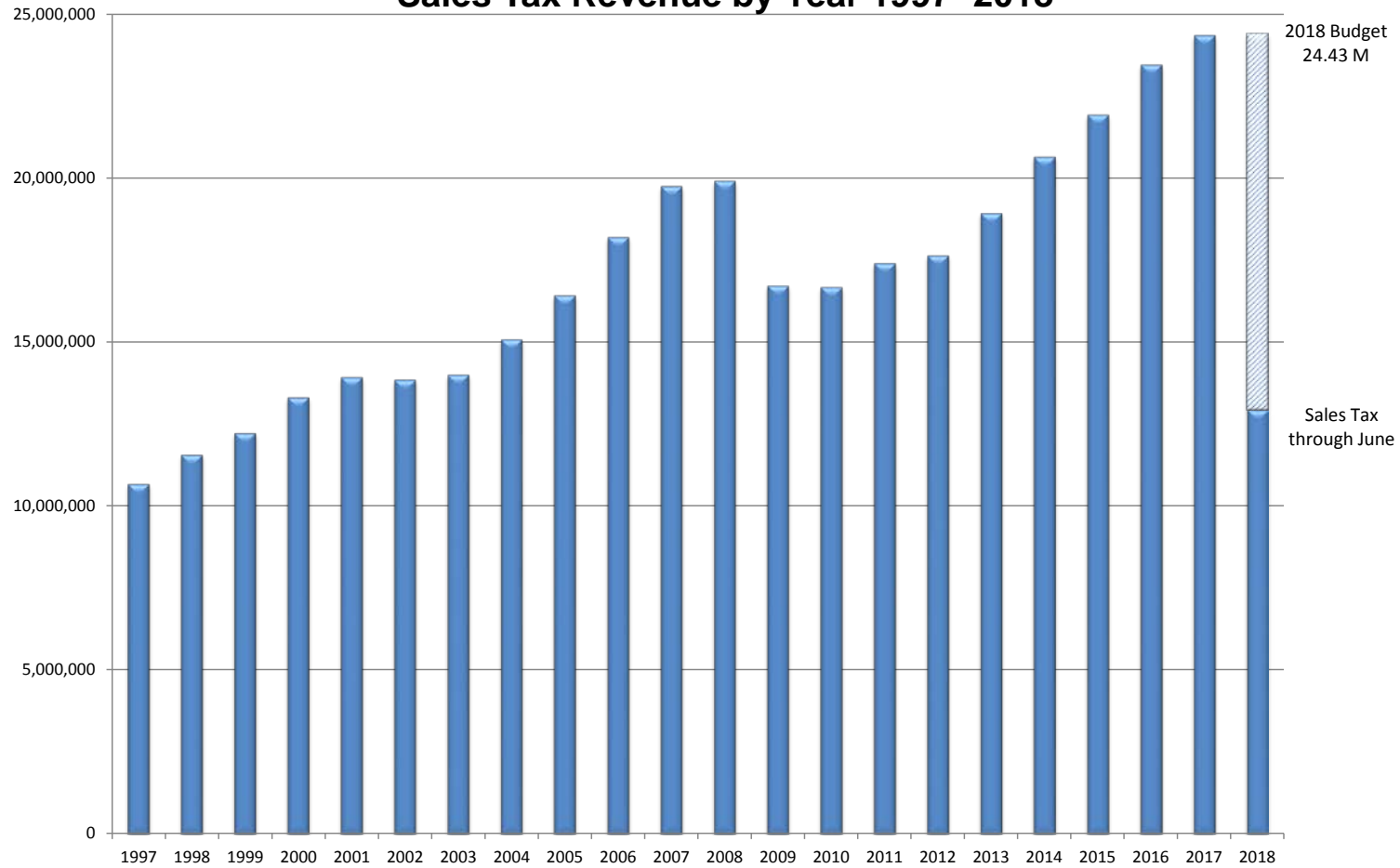
	Jun	Jul	Aug	Sep	Oct	Nov	Dec	Jan	Feb	Mar	Apr	May	Jun
■ PRIOR YEAR	102,180	142,890	307,375	227,399	110,845	143,485	(48,275)	175,816	31,450	(3,429)	668,139	137,087	224,435
■ 2017-2018	224,435	112,170	121,198	441,507	168,434	230,415	110,528	32,982	92,662	104,796	137,737	208,484	186,197

Historical Sales Tax Data Sales Tax Totals - 2003 to 2018



	January	February	March	April	May	June	July	August	September	October	November	December
2003	\$1,471,061	1,497,398	1,787,877	737,255	708,947	979,861	1,215,159	1,207,373	942,596	842,980	770,632	1,833,614
2004	\$1,530,388	1,609,507	1,855,895	793,619	744,456	1,097,619	1,325,813	1,209,657	1,112,747	875,854	839,590	2,083,871
2005	\$1,617,152	1,735,422	1,968,239	803,359	815,925	1,223,263	1,457,514	1,299,302	1,201,406	962,731	961,551	2,369,566
2006	\$1,811,413	1,861,558	2,322,443	908,584	941,595	1,377,269	1,614,695	1,436,115	1,307,845	1,139,648	1,084,858	2,386,275
2007	\$2,044,667	2,032,045	2,450,620	1,016,601	1,015,101	1,510,706	1,676,821	1,567,534	1,470,714	1,281,546	1,115,446	2,561,705
2008	\$2,166,093	2,180,532	2,570,347	999,144	1,077,244	1,500,946	1,728,329	1,612,531	1,440,373	1,244,023	1,030,654	2,354,077
2009	\$1,900,660	1,767,622	2,022,205	960,333	908,729	1,203,304	1,419,472	1,301,838	1,176,374	967,698	951,706	2,130,350
2010	\$1,813,155	1,743,152	1,942,237	931,573	853,085	1,204,077	1,462,648	1,300,401	1,235,126	967,688	984,189	2,232,403
2011	\$1,761,158	1,716,963	2,150,278	907,893	872,240	1,304,067	1,528,476	1,411,387	1,335,629	1,008,207	1,052,340	2,349,674
2012	\$1,761,959	1,770,126	2,125,388	951,540	941,877	1,383,426	1,559,801	1,461,392	1,328,744	1,048,827	1,049,425	2,249,514
2013	\$1,919,887	1,916,581	2,242,412	955,334	1,013,860	1,454,259	1,662,137	1,584,036	1,408,659	1,117,302	1,120,256	2,528,232
2014	\$2,073,559	1,988,146	2,421,883	1,035,139	1,082,596	1,595,084	1,896,956	1,745,617	1,535,341	1,250,229	1,249,980	2,761,147
2015	\$2,204,914	2,188,460	2,498,079	1,134,521	1,111,391	1,700,528	2,040,035	1,793,173	1,649,280	1,308,089	1,254,026	3,037,872
2016	\$2,305,654	2,393,003	2,671,088	1,141,125	1,224,092	1,872,237	2,204,610	1,918,639	1,856,102	1,381,059	1,371,298	3,110,277
2017	\$2,430,787	2,373,832	2,803,748	1,218,805	1,281,430	1,954,784	2,262,006	1,939,869	1,944,272	1,498,343	1,463,599	3,167,019
2018	\$2,653,565	2,541,202	2,933,481	1,295,281	1,442,902	2,063,543						

Sales Tax Revenue by Year 1997- 2018



Totals by Year	
1997	\$ 10,672,320
1998	\$ 11,559,068
1999	\$ 12,218,807
2000	\$ 13,304,983
2001	\$ 13,921,749
2002	\$ 13,841,283
2003	\$ 13,994,753
2004	\$ 15,079,016
2005	\$ 16,415,430
2006	\$ 18,192,298
2007	\$ 19,743,507
2008	\$ 19,904,293
2009	\$ 16,710,291
2010	\$ 16,669,735
2011	\$ 17,398,312
2012	\$ 17,632,019
2013	\$ 18,922,955
2014	\$ 20,635,678
2015	\$ 21,920,371
2016	\$ 23,449,184
2017	\$ 24,338,496
* 2018	\$ 12,929,975

* 2018 total is year-to-date through June