



April 2018 Taxes, Remitted in May 2018 Sales, Use, and Accommodation Tax Report

This City of Steamboat Springs Sales, Use, and Accommodation Tax Report examines tax collections for the month of April 2018, which were remitted to the City in May 2018.

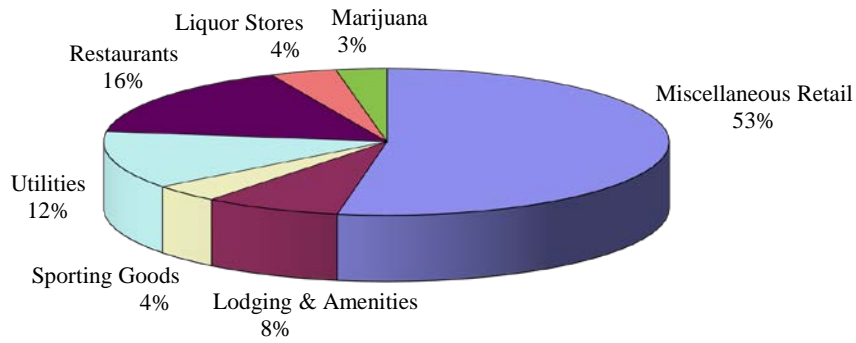
Sales Tax

April 2018 sales tax collections increased by 4.43% compared to April 2017.
Year-to-date total sales tax collections are 6.27% higher than those of 2017 year-to-date.

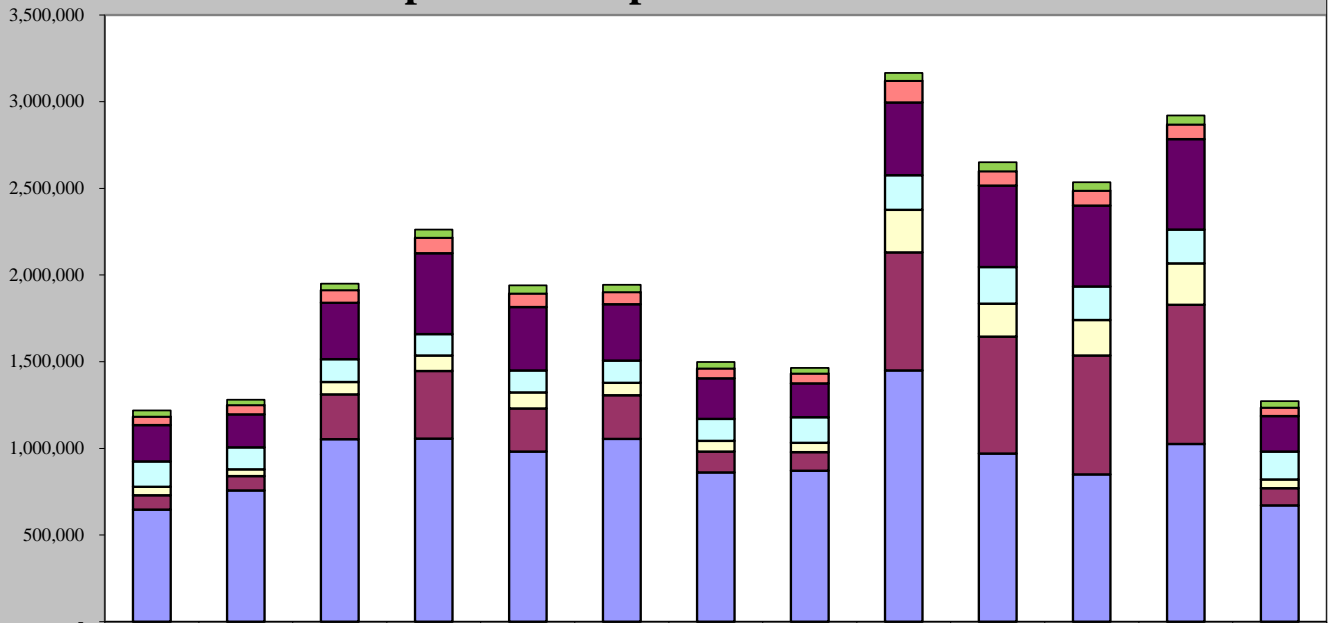
Sales Tax April 2018	Sales Tax April 2017	% increase/decrease over last April
\$1,272,053	\$1,218,118	4.43%

Sales Tax 2018 YTD	Sales Tax 2017 YTD	% increase/decrease over prior Year to Date
\$9,379,021	\$8,825,624	6.27%

April 2018 Sales Categories



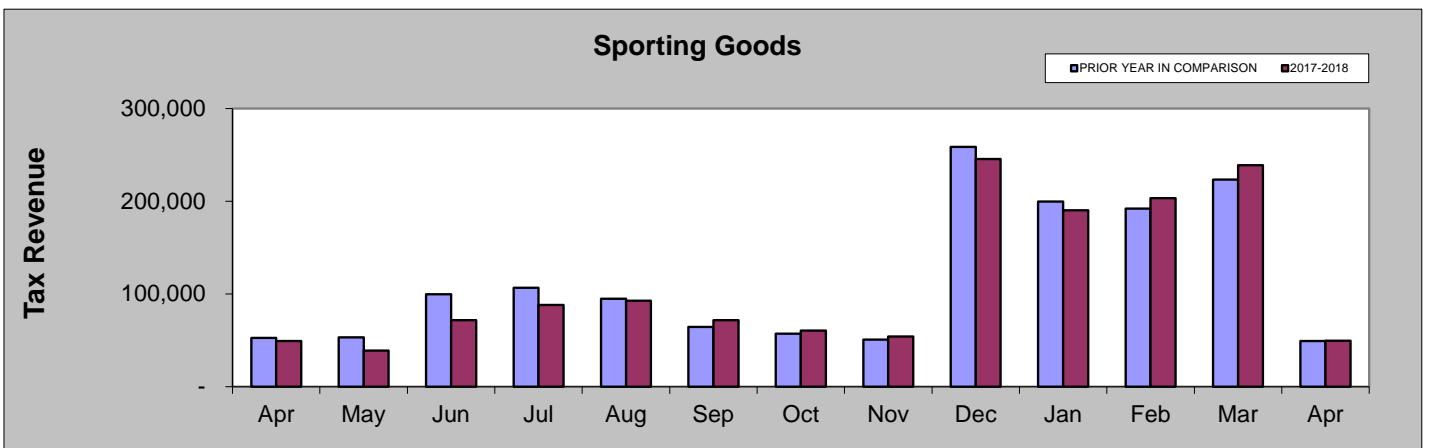
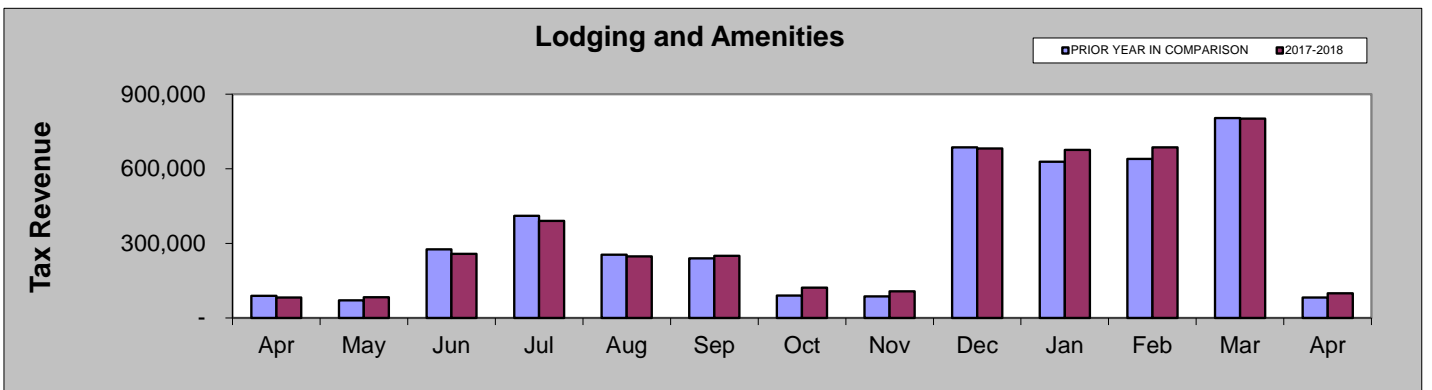
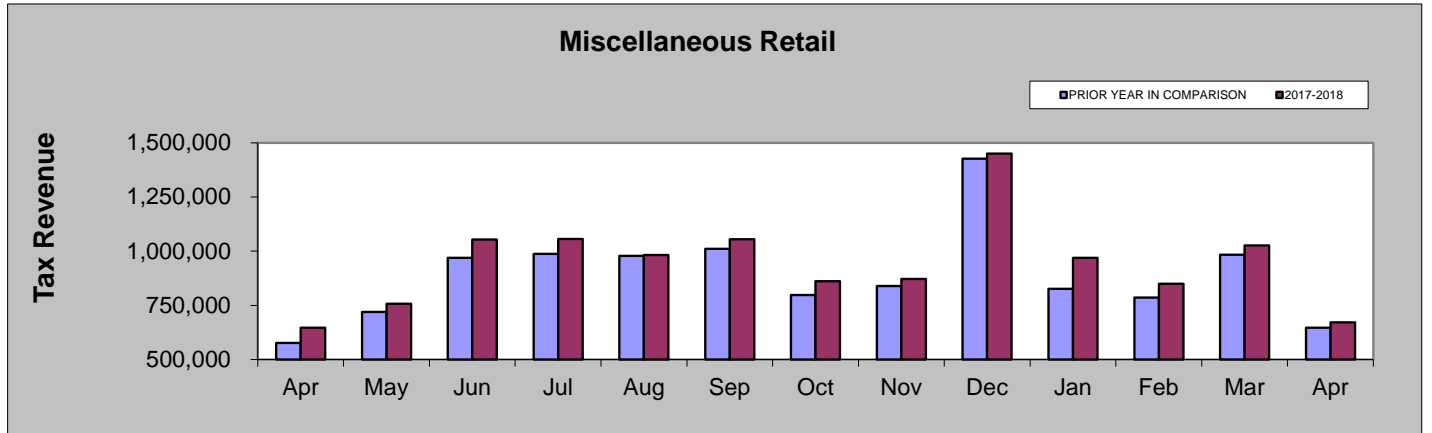
April 2017 - April 2018

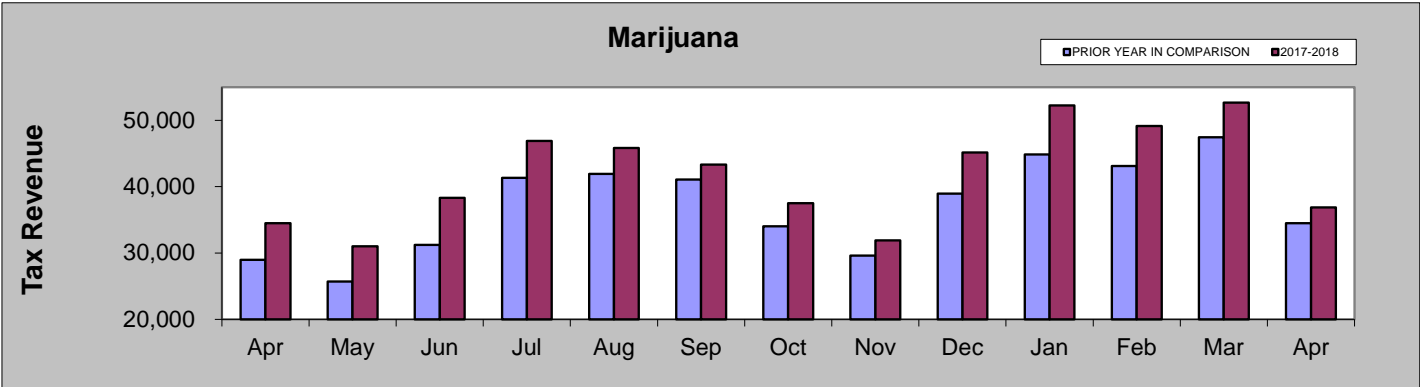
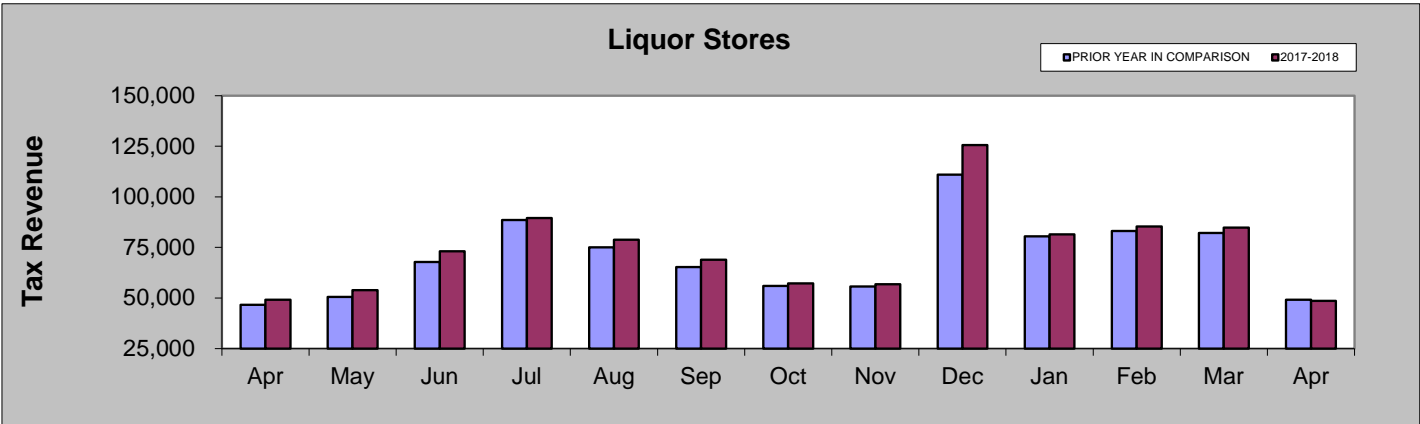
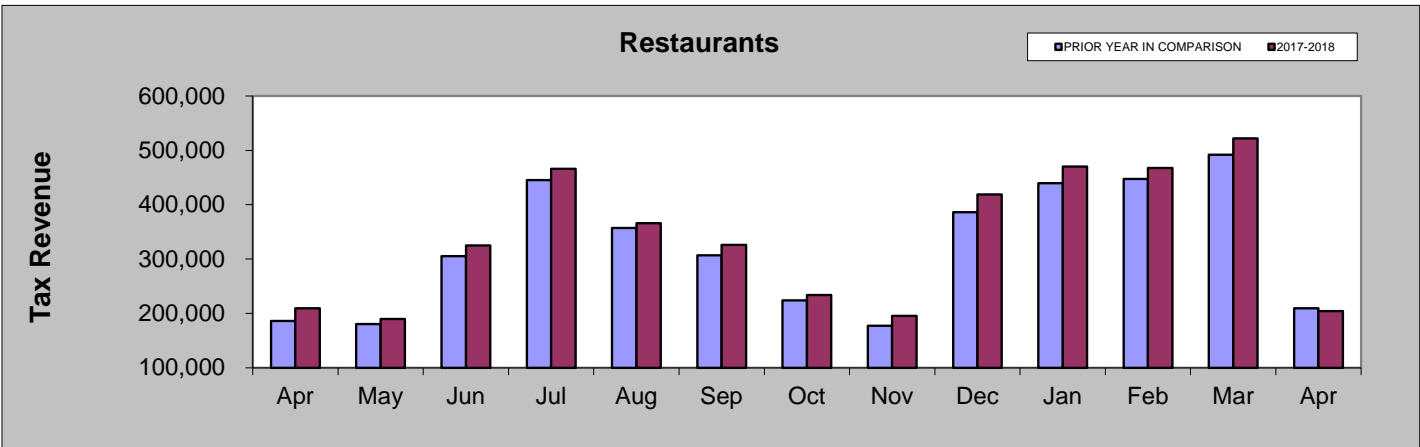
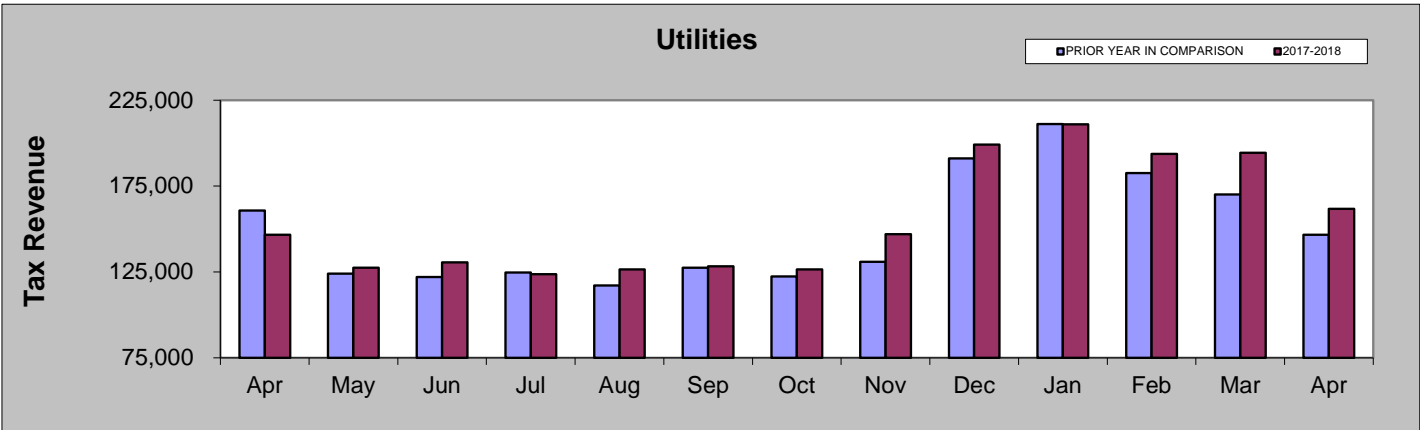


	Apr-17	May-17	Jun-17	Jul-17	Aug-17	Sep-17	Oct-17	Nov-17	Dec-17	Jan-18	Feb-18	Mar-18	Apr-18
Marijuana	34,510	31,021	38,304	46,910	45,817	43,327	37,495	31,913	45,146	52,255	49,156	52,692	36,874
Liquor Stores	49,185	53,847	73,163	89,541	78,774	68,892	57,191	56,771	125,660	81,482	85,379	84,750	48,539
Restaurants	209,780	189,651	325,368	466,212	365,998	326,063	234,045	195,335	418,664	470,029	467,754	522,124	204,351
Utilities	146,582	127,395	130,637	123,752	126,523	128,255	126,553	146,984	199,225	211,049	193,675	194,405	161,795
Sporting Goods	49,228	38,810	71,810	88,270	92,697	71,883	60,651	54,083	245,694	190,312	203,449	238,925	49,575
Lodging & Amenities	81,696	83,054	258,158	389,856	247,759	250,397	121,391	107,146	681,197	675,506	686,431	802,200	99,306
Miscellaneous Retail	647,137	756,736	1,053,492	1,056,922	982,089	1,055,361	860,794	871,334	1,449,900	969,525	849,872	1,025,998	671,614

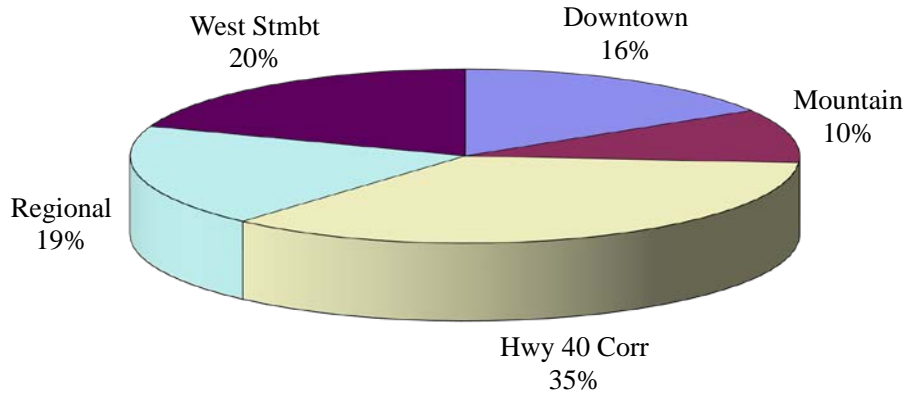
APRIL COMPARISON BY CATEGORY

	2018	2017	% change
Miscellaneous Retail	\$671,614	\$647,137	3.78%
Lodging and Amenities	\$99,306	\$81,696	21.56%
Sporting Goods	\$49,575	\$49,228	0.70%
Utilities	\$161,795	\$146,582	10.38%
Restaurants	\$204,351	\$209,780	-2.59%
Liquor Stores	\$48,539	\$49,185	-1.31%
Marijuana	\$36,874	\$34,510	6.85%

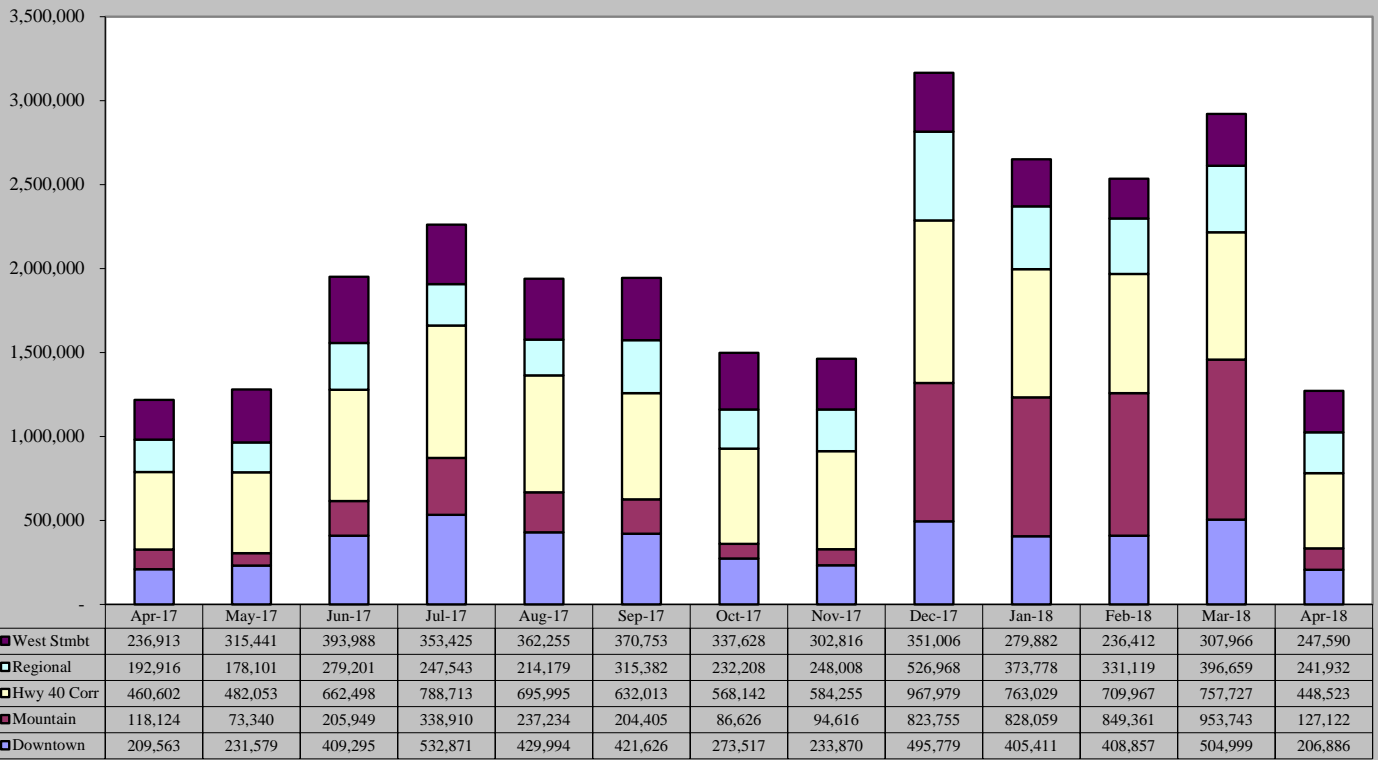




April 2018 Sales Tax By Area

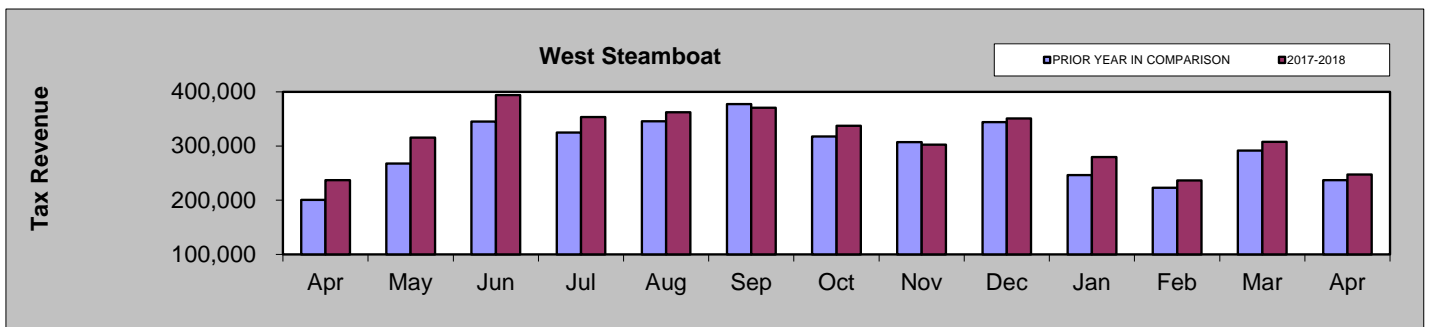
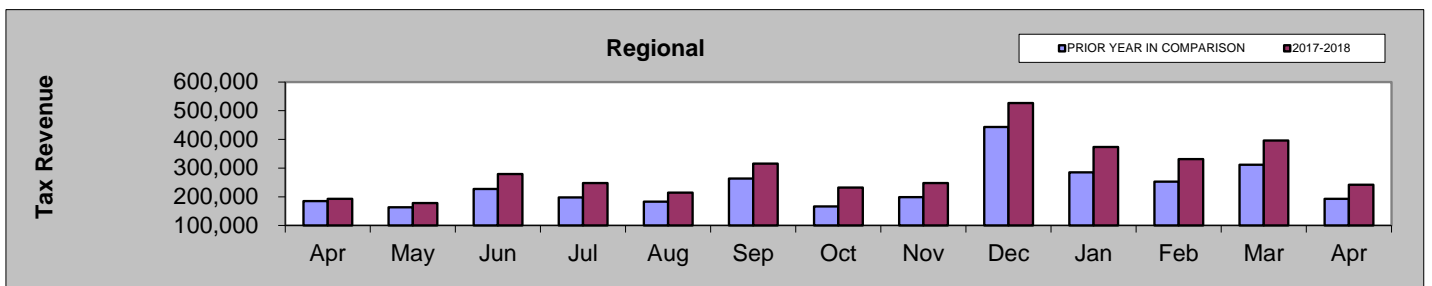
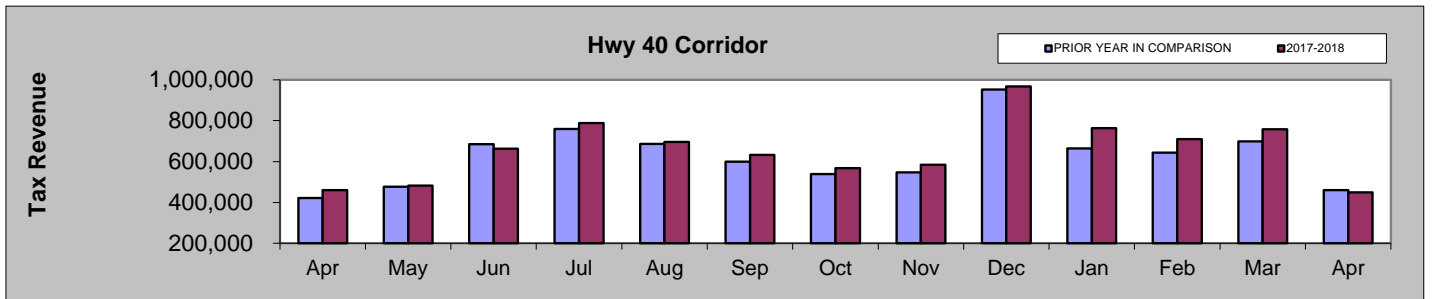
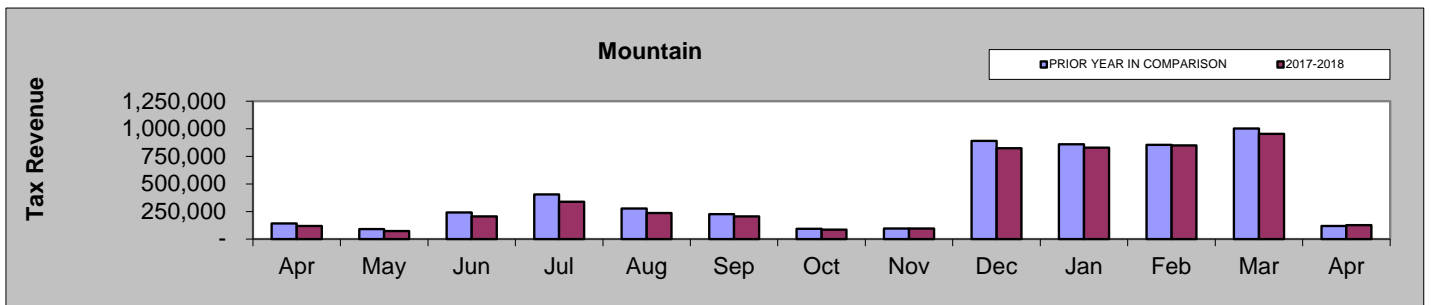
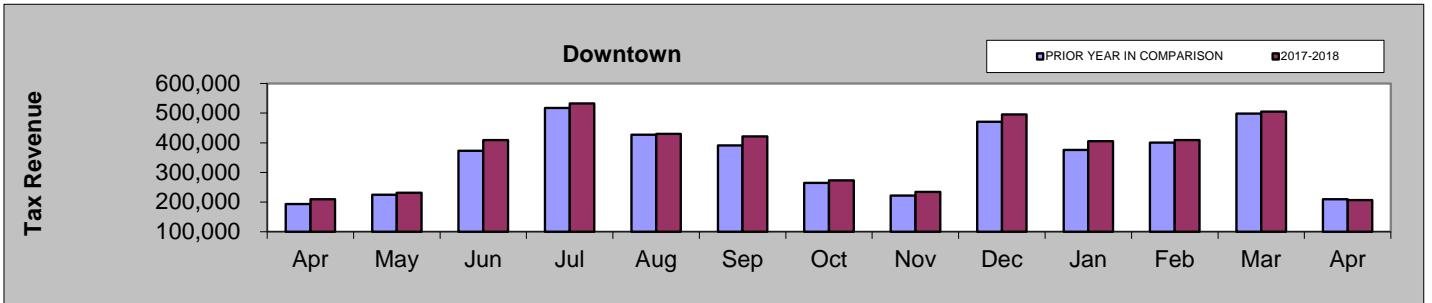


April 2017 - April 2018



APRIL COMPARISON BY AREA

Area	2018	2017	% change
Downtown	\$206,886	\$209,563	-1.28%
Mountain	\$127,122	\$118,124	7.62%
Hwy 40 Corridor	\$448,523	\$460,602	-2.62%
Regional	\$241,932	\$192,916	25.41%
West Steamboat	\$247,590	\$236,913	4.51%



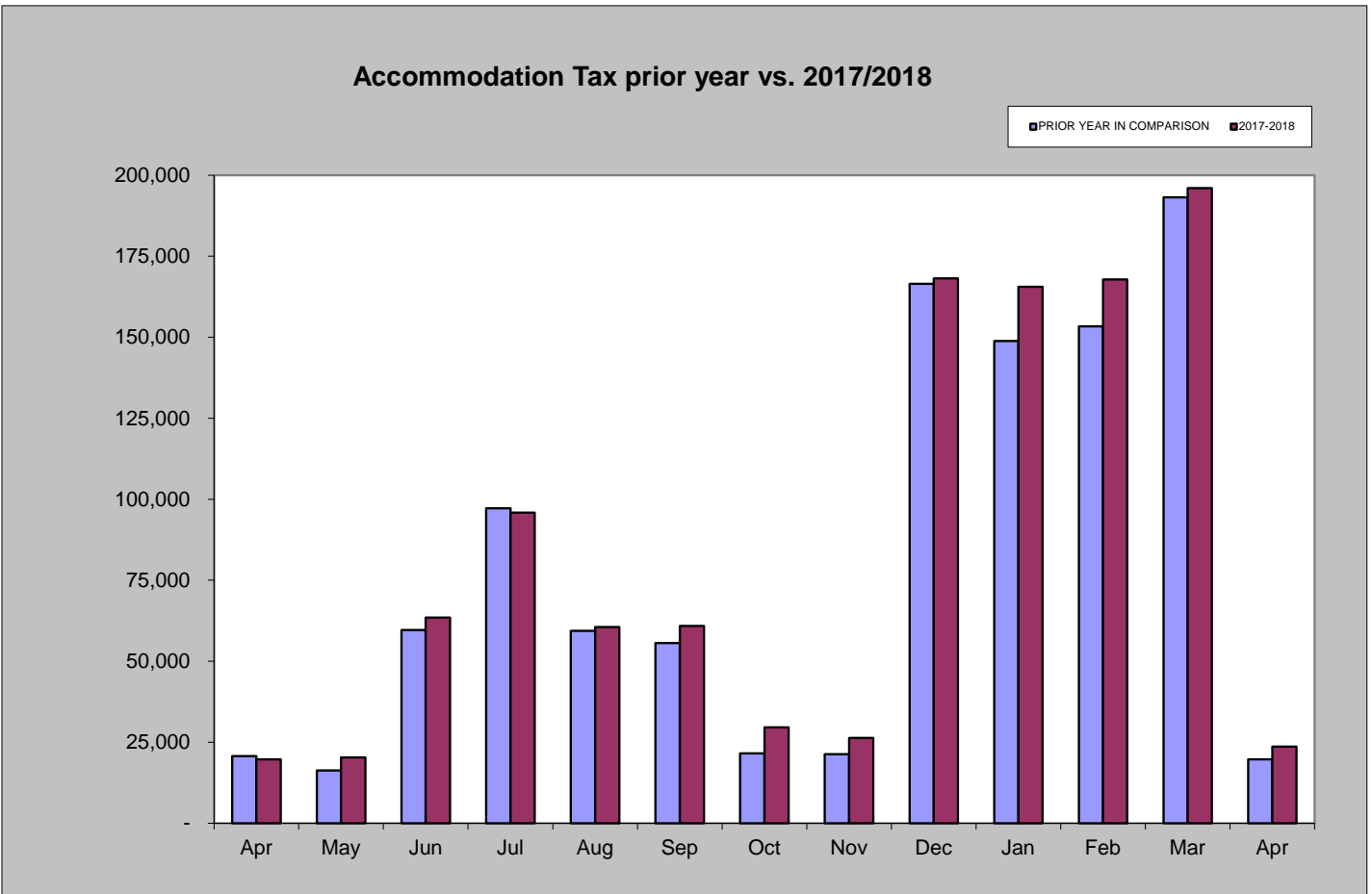
Accommodation Tax

April 2018 accommodation tax collections increased by 19.95% compared to April 2017.

Year-to-date accommodation tax collections are 7.37% higher than those of 2017 year-to-date.

Accommodation Tax April 2018	Accommodation Tax April 2017	% increase/decrease over last April
\$23,660	\$19,725	19.95%

Accommodation Tax 2018 YTD	Accommodation Tax 2017 YTD	% increase/decrease over prior Year to Date
\$553,029	\$515,086	7.37%



Building Use Tax

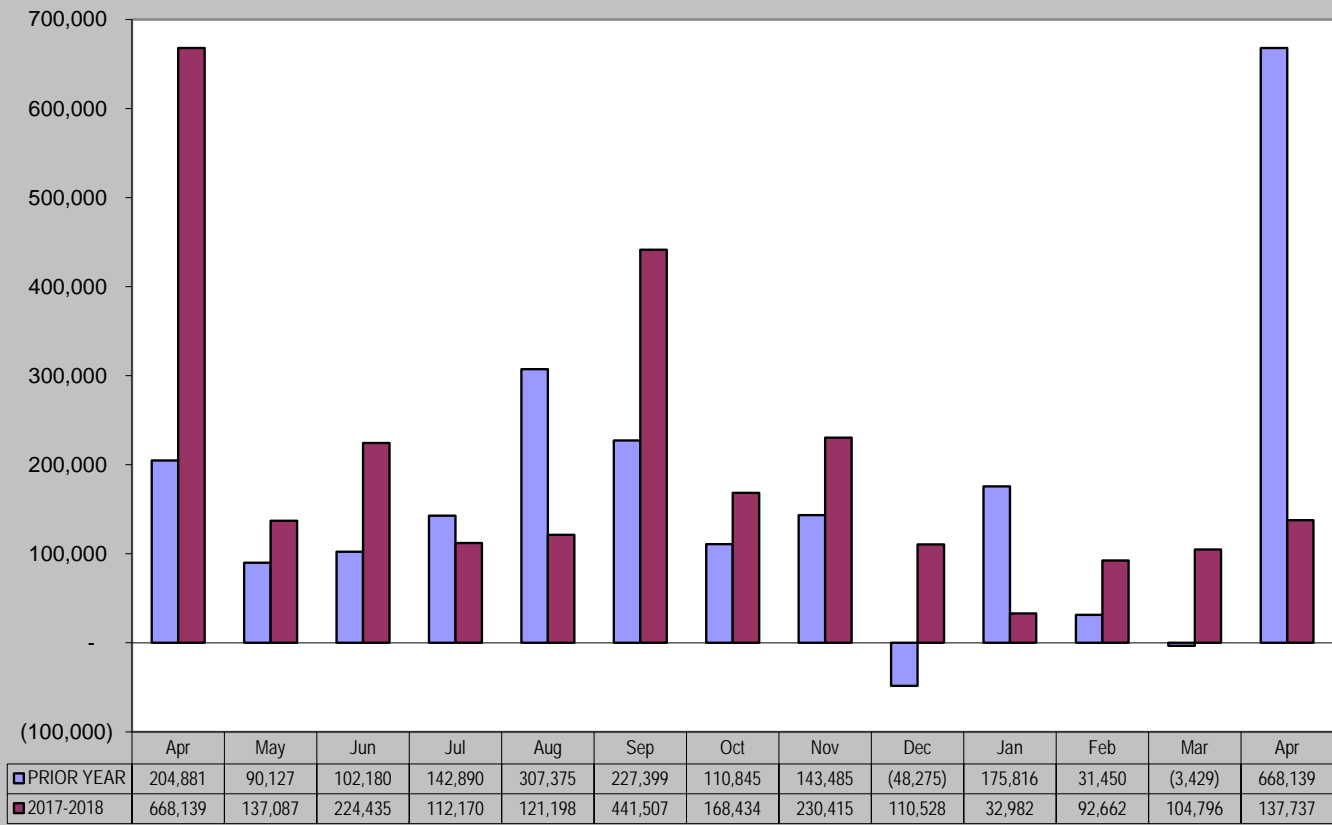
April 2018 building use tax collections decreased by 79% compared to April 2017.

Year-to-date building use tax collections are 58% lower than those of 2017 year-to-date.

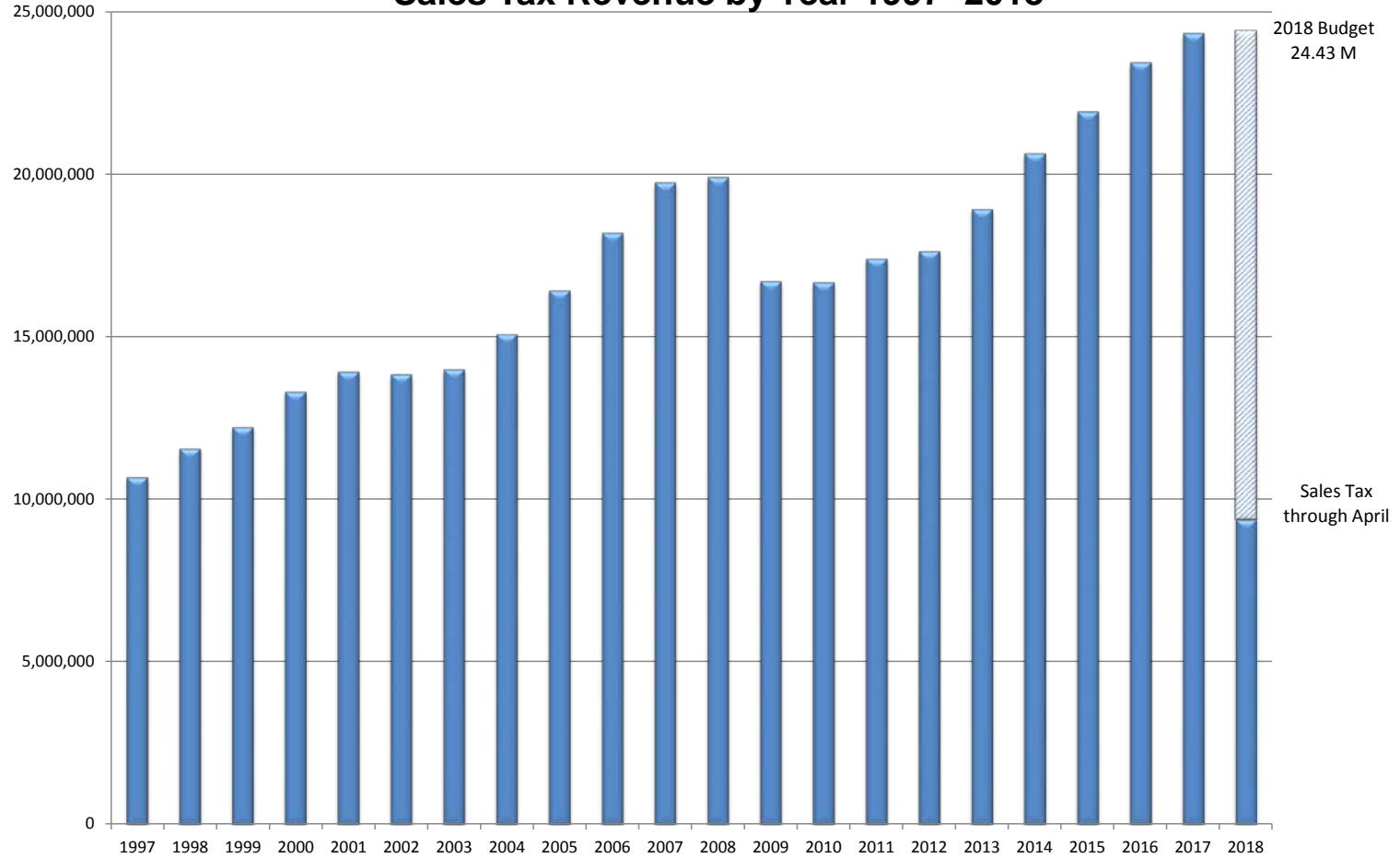
Building Use Tax April 2018	Building Use Tax April 2017	% increase/decrease over last April
\$137,737	\$668,139	-79%

Building Use Tax 2018 YTD	Building Use Tax 2017 YTD	% increase/decrease over prior Year to Date
\$368,178	\$871,976	-58%

Building Use Tax - prior year vs. 2017/2018



Sales Tax Revenue by Year 1997- 2018



Totals by Year	
1997	\$ 10,672,320
1998	\$ 11,559,068
1999	\$ 12,218,807
2000	\$ 13,304,983
2001	\$ 13,921,749
2002	\$ 13,841,283
2003	\$ 13,994,753
2004	\$ 15,079,016
2005	\$ 16,415,430
2006	\$ 18,192,298
2007	\$ 19,743,507
2008	\$ 19,904,293
2009	\$ 16,710,291
2010	\$ 16,669,735
2011	\$ 17,398,312
2012	\$ 17,632,019
2013	\$ 18,922,955
2014	\$ 20,635,678
2015	\$ 21,920,371
2016	\$ 23,438,583
2017	\$ 24,329,540
* 2018	\$ 9,379,021

* 2018 total is year-to-date through April