



February 2018 Taxes, Remitted in March 2018 Sales, Use, and Accommodation Tax Report

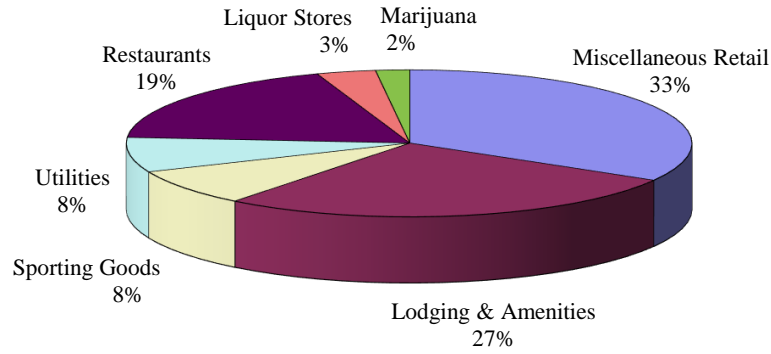
This City of Steamboat Springs Sales, Use, and Accommodation Tax Report examines tax collections for the month of February 2018, which were remitted to the City in March 2018.

Sales Tax

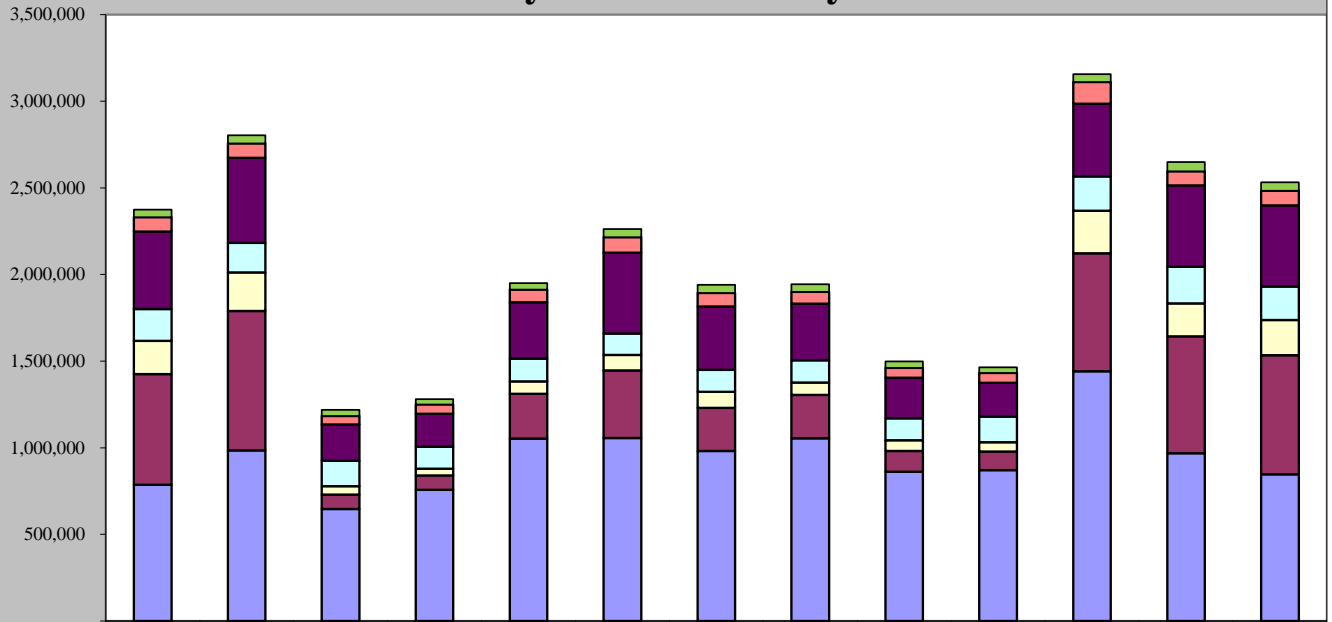
February 2018 sales tax collections increased by 6.70% compared to February 2017.
Year-to-date total sales tax collections are 7.85% higher than those of 2017 year-to-date.

| | | |
|------------------------------------|------------------------------------|--|
| Sales Tax February 2018 | Sales Tax February 2017 | % increase/decrease over last February |
| \$2,532,750 | \$2,373,624 | 6.70% |
| Sales Tax 2018 YTD | Sales Tax 2017 YTD | % increase/decrease over prior Year to Date |
| \$5,181,113 | \$4,804,137 | 7.85% |

February 2018 Sales Categories



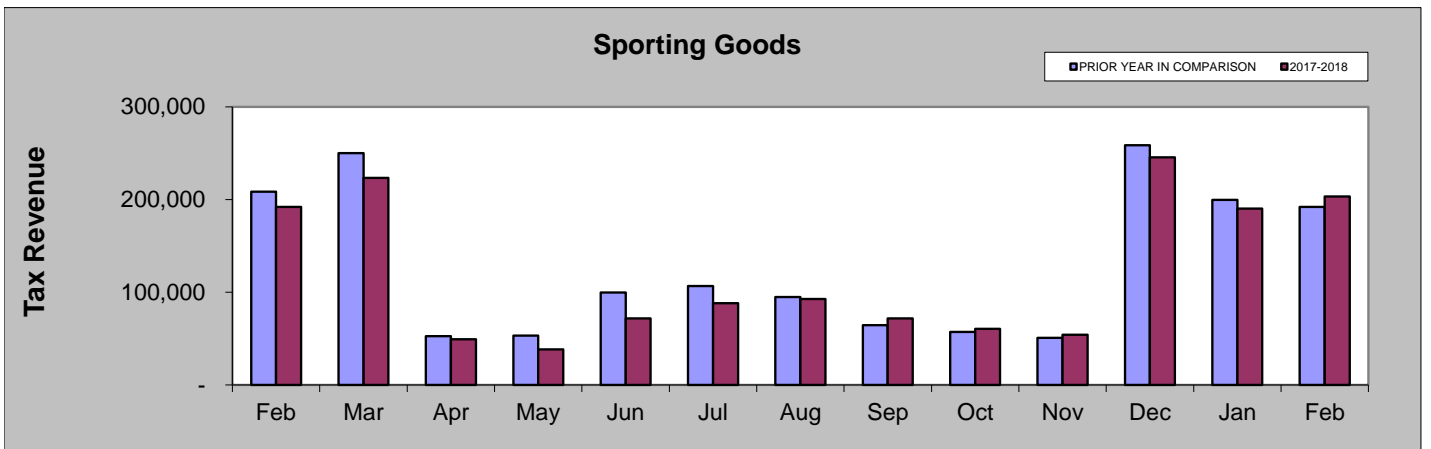
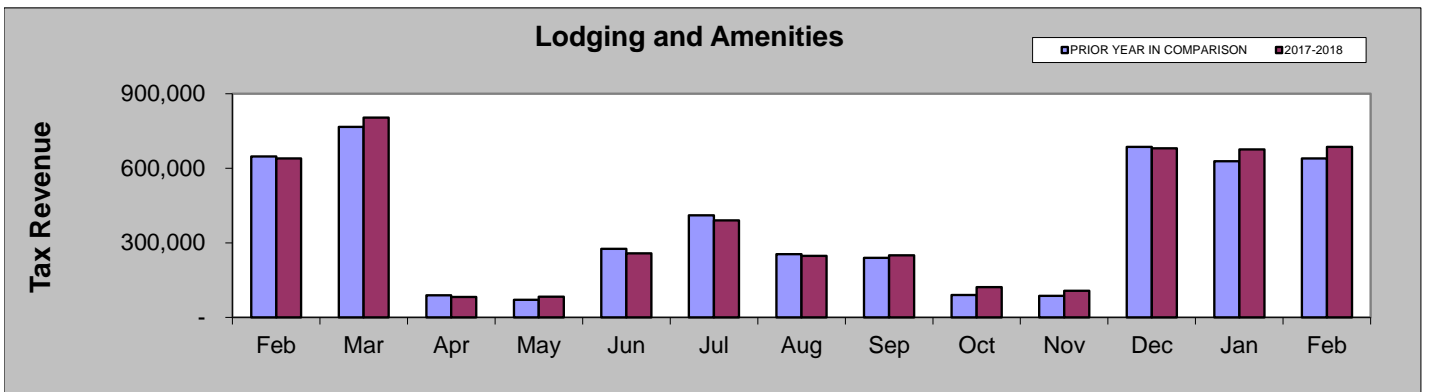
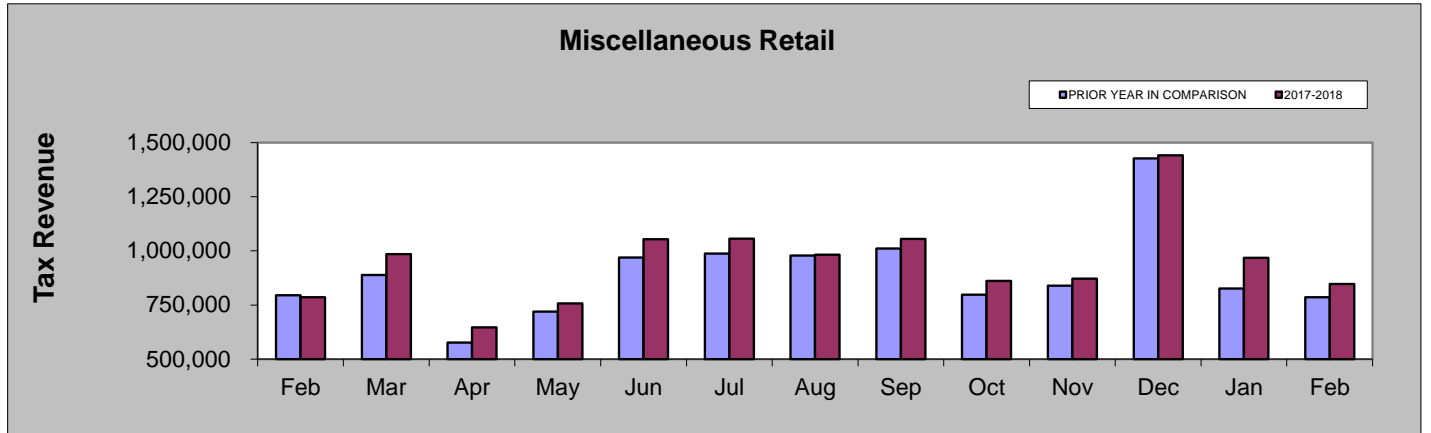
February 2017 - February 2018

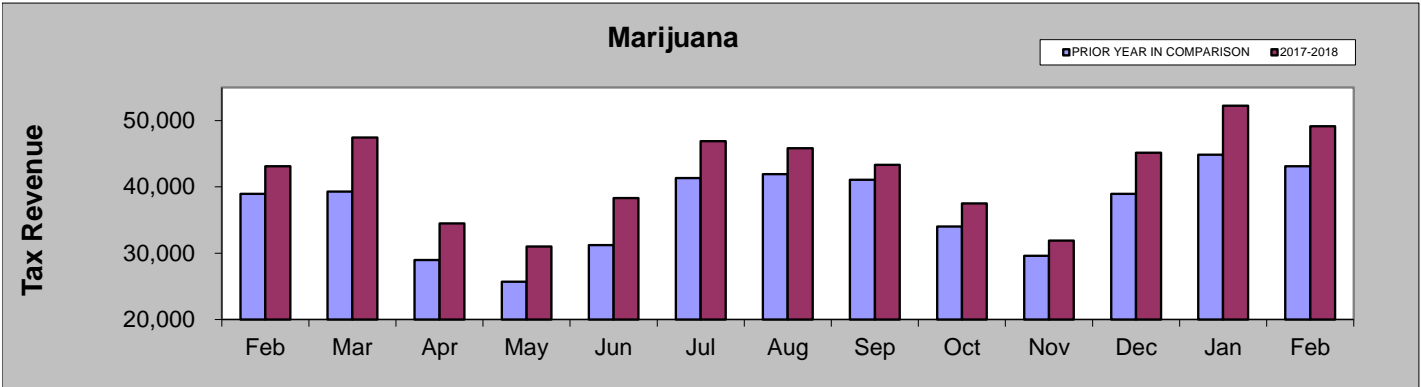
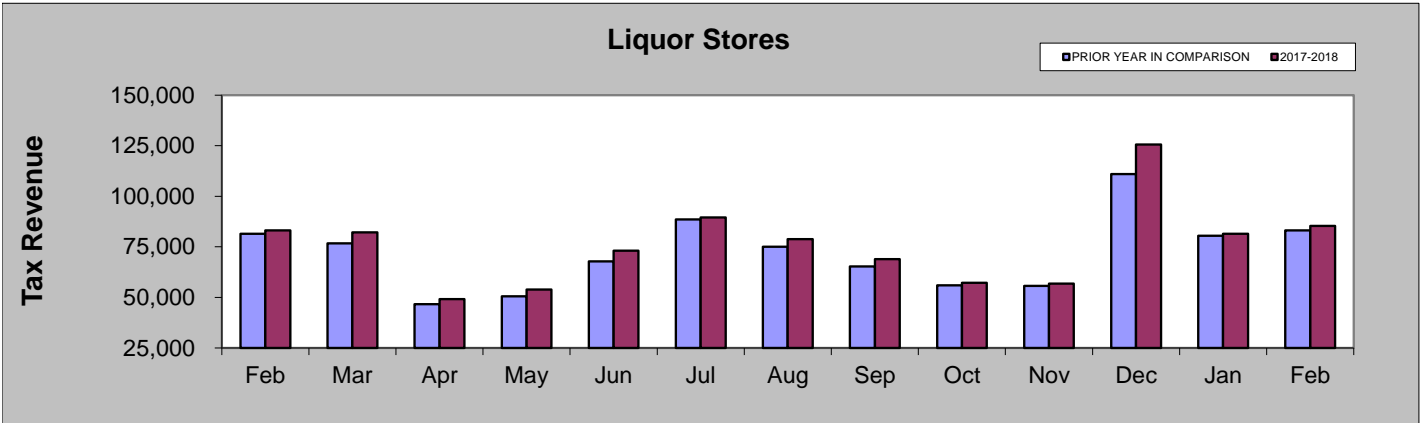
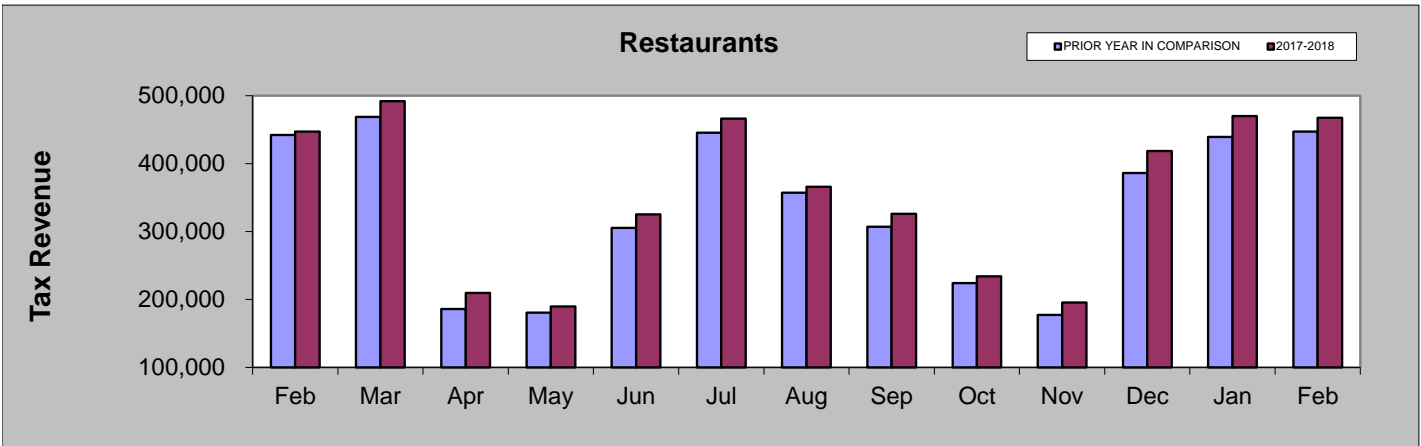
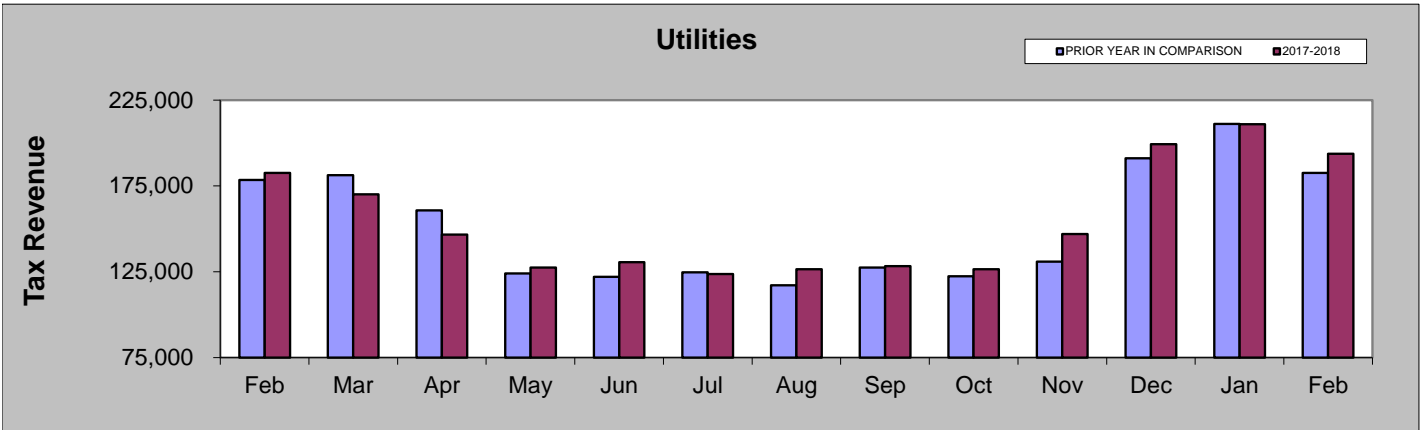


| | Feb-17 | Mar-17 | Apr-17 | May-17 | Jun-17 | Jul-17 | Aug-17 | Sep-17 | Oct-17 | Nov-17 | Dec-17 | Jan-18 | Feb-18 |
|----------------------|---------|---------|---------|---------|-----------|-----------|---------|-----------|---------|---------|-----------|---------|---------|
| Marijuana | 43,110 | 47,454 | 34,510 | 31,021 | 38,304 | 46,910 | 45,817 | 43,327 | 37,495 | 31,913 | 45,146 | 52,255 | 49,156 |
| Liquor Stores | 83,172 | 82,179 | 49,185 | 53,847 | 73,163 | 89,541 | 78,774 | 68,892 | 57,191 | 56,771 | 125,660 | 81,482 | 85,379 |
| Restaurants | 447,186 | 491,868 | 209,780 | 189,651 | 325,368 | 466,212 | 365,998 | 326,063 | 234,045 | 195,335 | 418,664 | 470,029 | 467,494 |
| Utilities | 182,602 | 170,159 | 146,582 | 127,395 | 130,637 | 123,752 | 126,523 | 128,255 | 126,553 | 146,984 | 199,303 | 211,049 | 193,675 |
| Sporting Goods | 192,059 | 223,451 | 49,228 | 38,431 | 71,810 | 88,270 | 92,697 | 71,883 | 60,651 | 54,083 | 245,694 | 190,312 | 203,449 |
| Lodging & Amenities | 639,285 | 804,204 | 81,696 | 83,054 | 258,158 | 389,856 | 247,759 | 249,969 | 121,391 | 107,146 | 680,253 | 675,506 | 686,431 |
| Miscellaneous Retail | 786,210 | 984,522 | 647,137 | 757,116 | 1,053,393 | 1,056,922 | 982,089 | 1,055,039 | 860,794 | 871,321 | 1,441,484 | 967,730 | 847,166 |

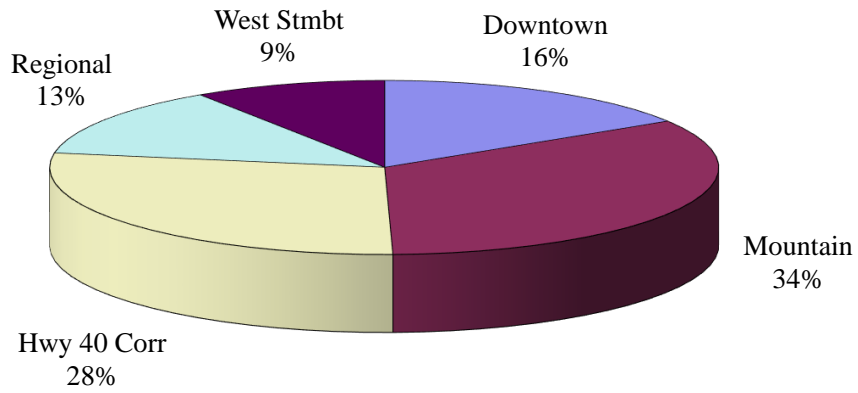
FEBRUARY COMPARISON BY CATEGORY

| | 2018 | 2017 | % change |
|-----------------------|-----------|-----------|----------|
| Miscellaneous Retail | \$847,166 | \$786,210 | 7.75% |
| Lodging and Amenities | \$686,431 | \$639,285 | 7.37% |
| Sporting Goods | \$203,449 | \$192,059 | 5.93% |
| Utilities | \$193,675 | \$182,602 | 6.06% |
| Restaurants | \$467,494 | \$447,186 | 4.54% |
| Liquor Stores | \$85,379 | \$83,172 | 2.65% |
| Marijuana | \$49,156 | \$43,110 | 14.02% |

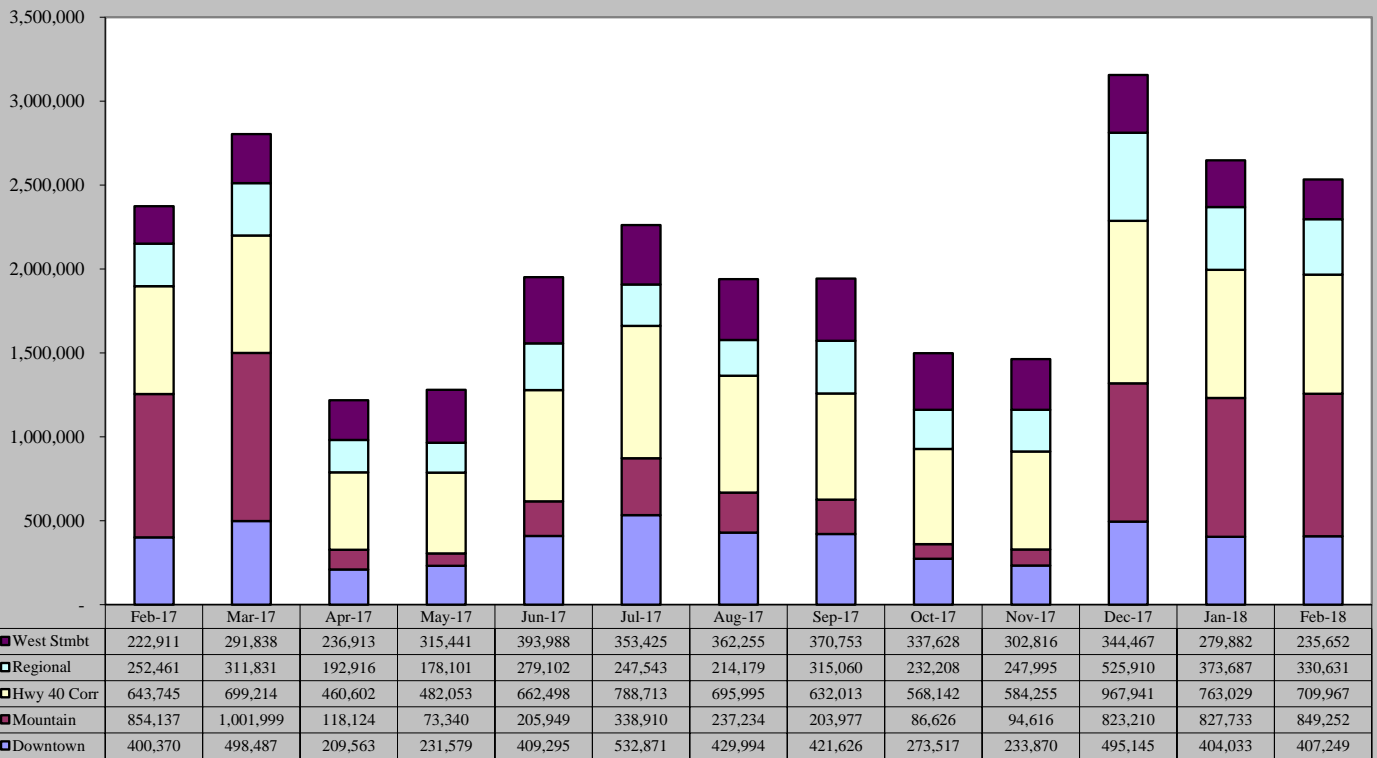




February 2018 Sales Tax By Area

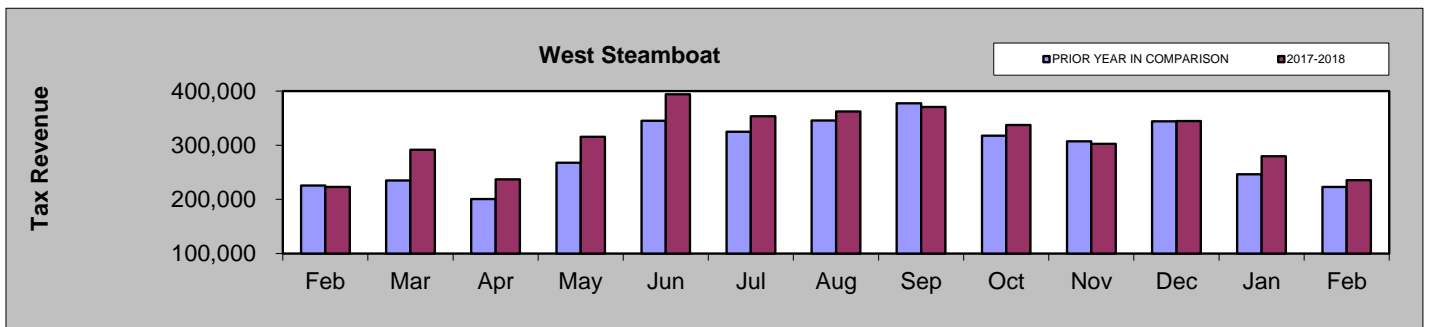
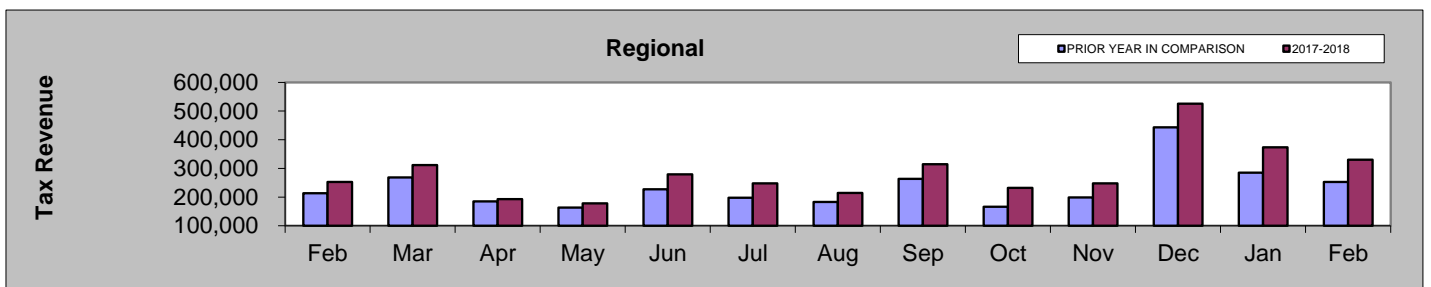
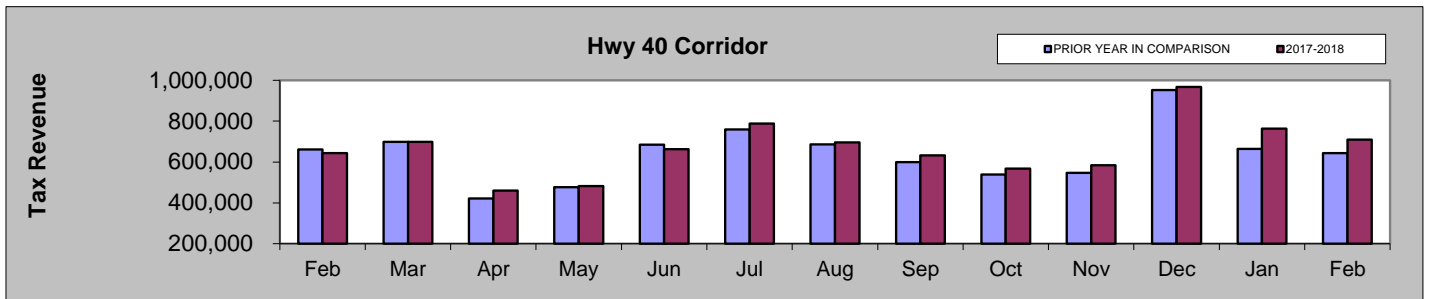
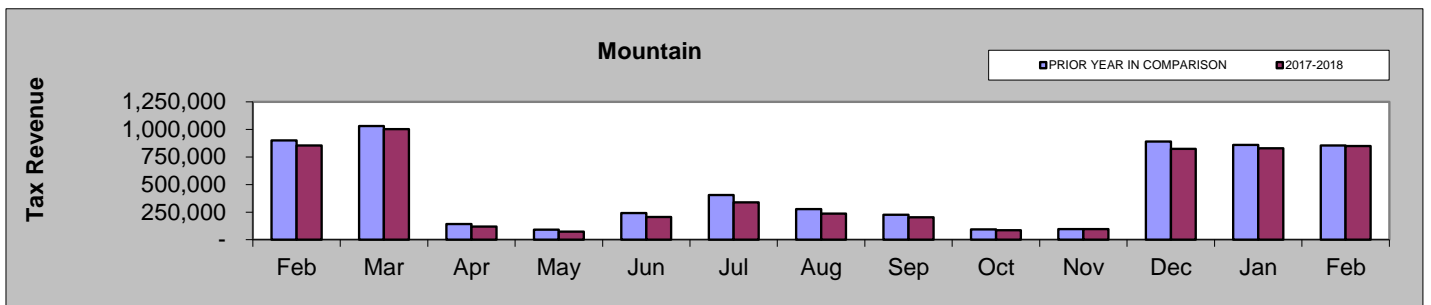
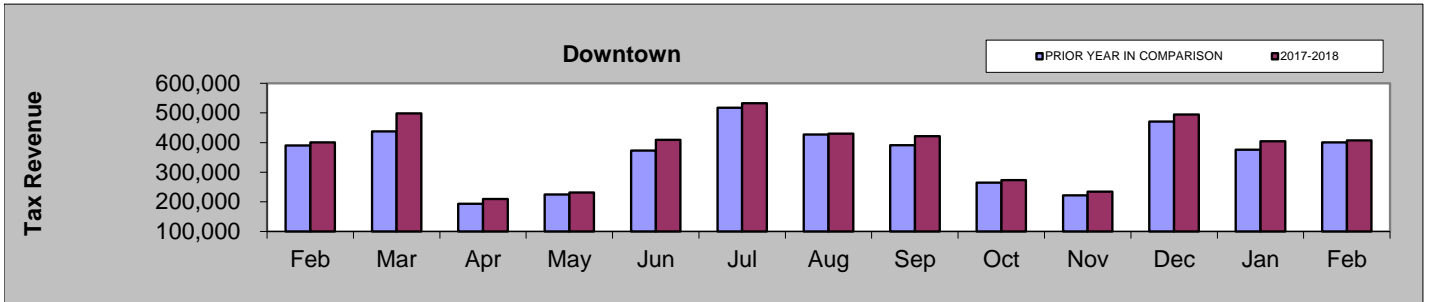


February 2017 - February 2018



FEBRUARY COMPARISON BY AREA

| Area | 2018 | 2017 | % change |
|-----------------|-----------|-----------|----------|
| Downtown | \$407,249 | \$400,370 | 1.72% |
| Mountain | \$849,252 | \$854,137 | -0.57% |
| Hwy 40 Corridor | \$709,967 | \$643,745 | 10.29% |
| Regional | \$330,631 | \$252,461 | 30.96% |
| West Steamboat | \$235,652 | \$222,911 | 5.72% |

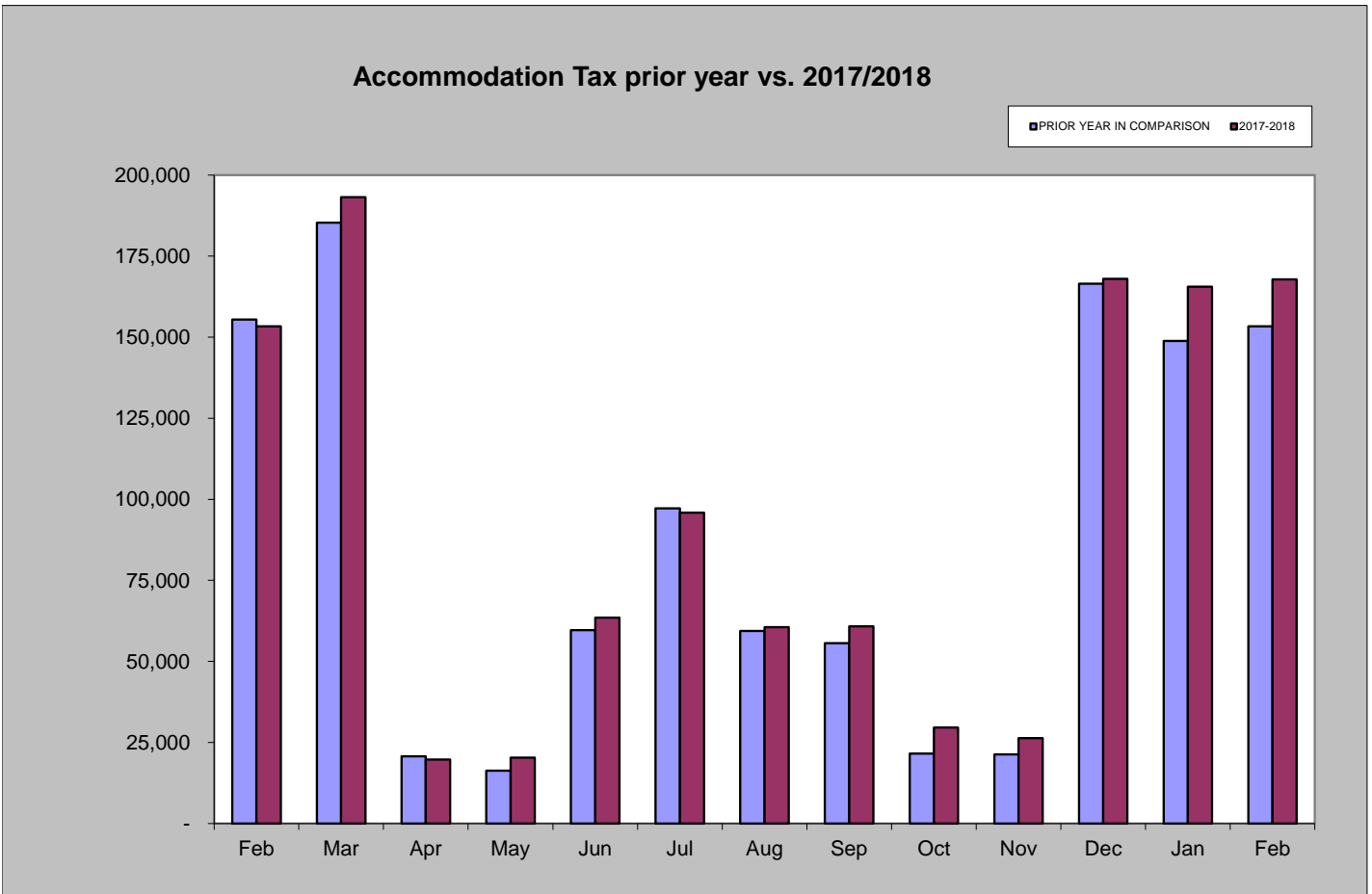


Accommodation Tax

February 2018 accommodation tax collections increased by 9.39% compared to February 2017.
 Year-to-date accommodation tax collections are 10.30% higher than those of 2017 year-to-date.

| Accommodation Tax February 2018 | Accommodation Tax February 2017 | % increase/decrease over last February |
|------------------------------------|------------------------------------|---|
| \$167,796 | \$153,395 | 9.39% |

| Accommodation Tax 2018 YTD | Accommodation Tax 2017 YTD | % increase/decrease over prior Year to Date |
|-------------------------------|-------------------------------|--|
| \$333,329 | \$302,203 | 10.30% |



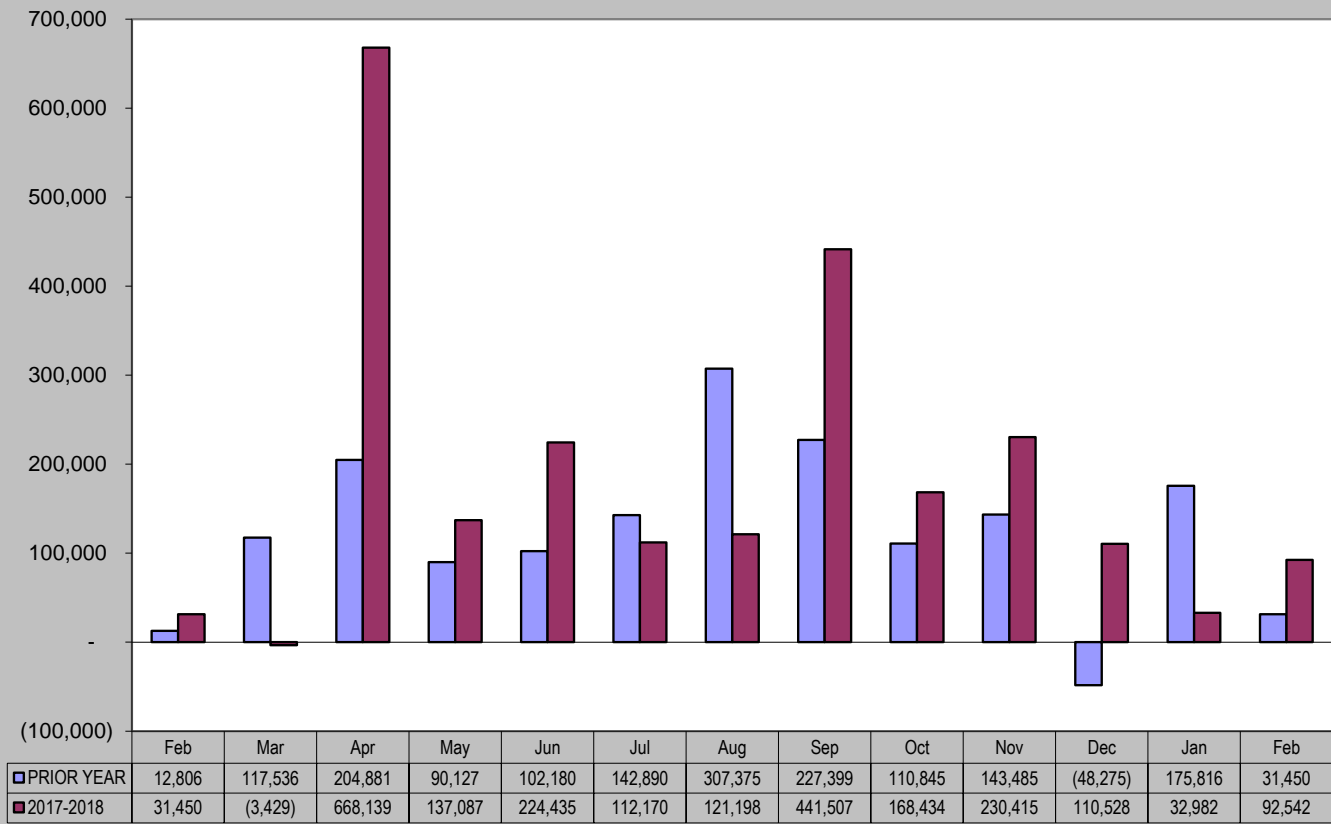
Building Use Tax

February 2018 building use tax collections increased by 194% compared to February 2017.
 Year-to-date building use tax collections are 39% lower than those of 2017 year-to-date.

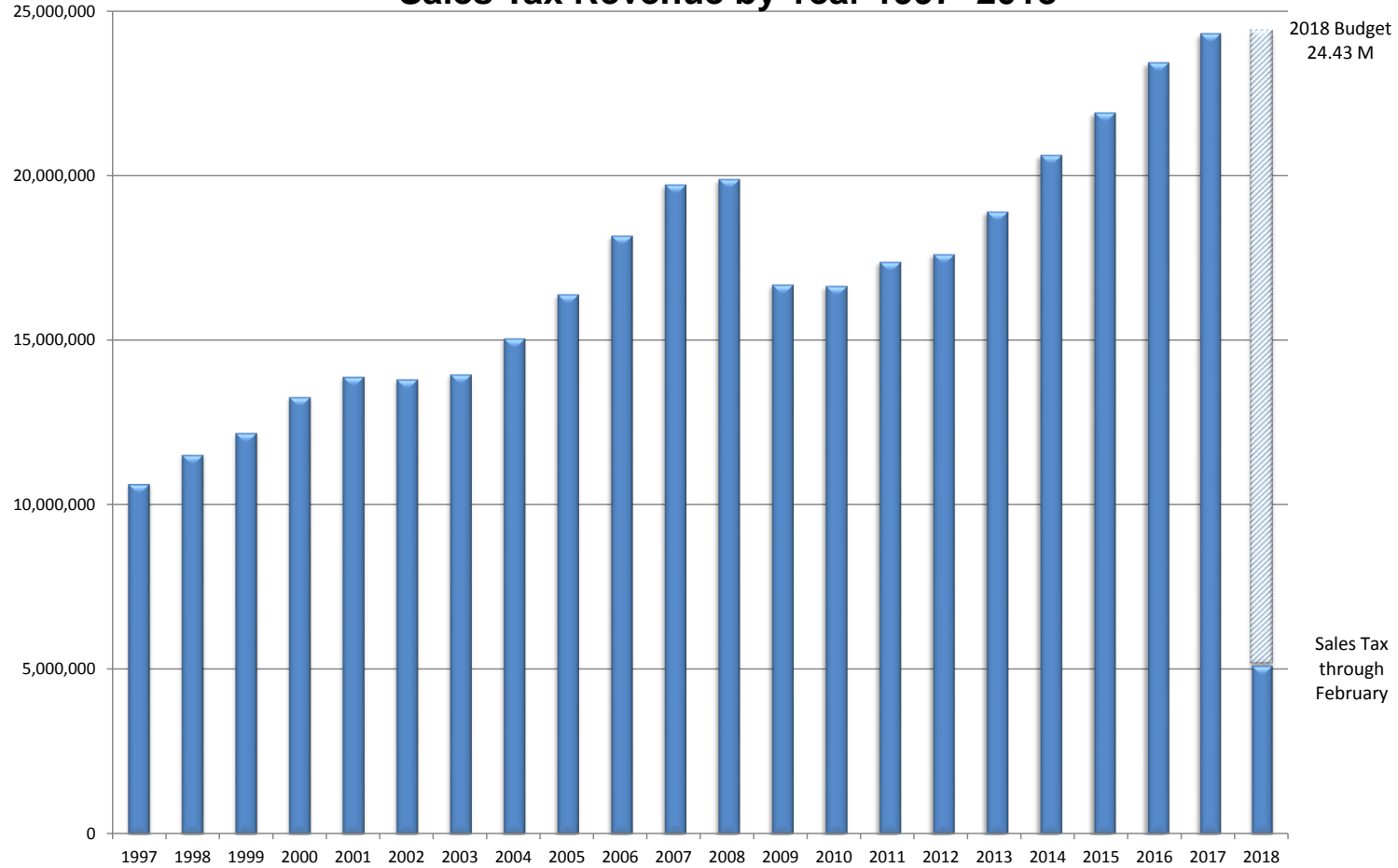
| Building Use Tax February 2018 | Building Use Tax February 2017 | % increase/decrease over last February |
|-----------------------------------|-----------------------------------|---|
| \$92,542 | \$31,450 | 194% |

| Building Use Tax 2018 YTD | Building Use Tax 2017 YTD | % increase/decrease over prior Year to Date |
|------------------------------|------------------------------|--|
| \$125,525 | \$207,267 | -39% |

Building Use Tax - prior year vs. 2017/2018



Sales Tax Revenue by Year 1997- 2018



| Totals by Year | |
|----------------|---------------|
| 1997 | \$ 10,672,320 |
| 1998 | \$ 11,559,068 |
| 1999 | \$ 12,218,807 |
| 2000 | \$ 13,304,983 |
| 2001 | \$ 13,921,749 |
| 2002 | \$ 13,841,283 |
| 2003 | \$ 13,994,753 |
| 2004 | \$ 15,079,016 |
| 2005 | \$ 16,415,430 |
| 2006 | \$ 18,192,298 |
| 2007 | \$ 19,743,507 |
| 2008 | \$ 19,904,293 |
| 2009 | \$ 16,710,291 |
| 2010 | \$ 16,669,735 |
| 2011 | \$ 17,398,312 |
| 2012 | \$ 17,632,019 |
| 2013 | \$ 18,922,955 |
| 2014 | \$ 20,635,678 |
| 2015 | \$ 21,920,371 |
| 2016 | \$ 23,438,573 |
| 2017 | \$ 24,319,863 |
| * 2018 | \$ 5,181,113 |

* 2018 total is year-to-date through February