



January 2018 Taxes, Remitted in February 2018 Sales, Use, and Accommodation Tax Report

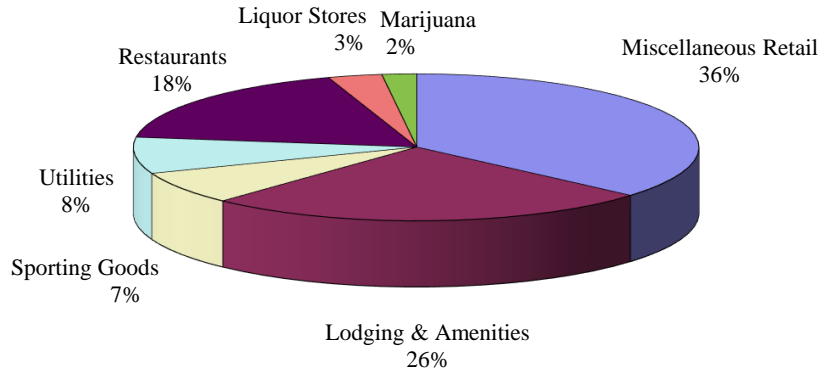
This City of Steamboat Springs Sales, Use, and Accommodation Tax Report examines tax collections for the month of January 2018, which were remitted to the City in February 2018.

Sales Tax

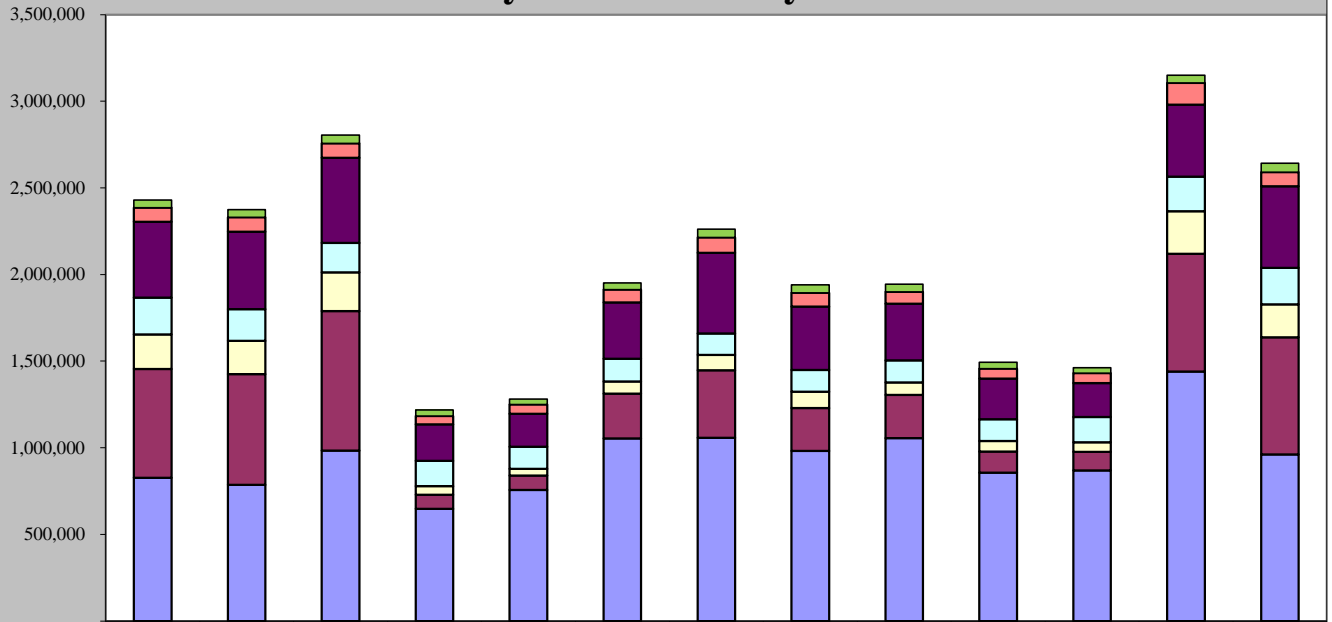
January 2018 sales tax collections increased by 8.72% compared to January 2017.

Sales Tax January 2018	Sales Tax January 2017	% increase/decrease over last January
\$2,642,490	\$2,430,513	8.72%

January 2018 Sales Categories



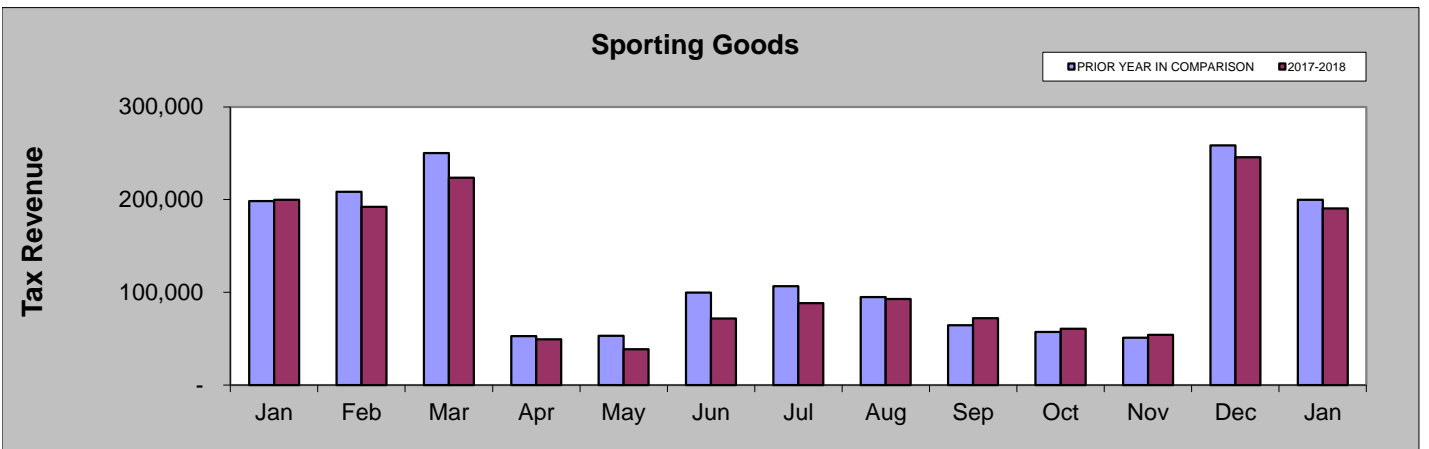
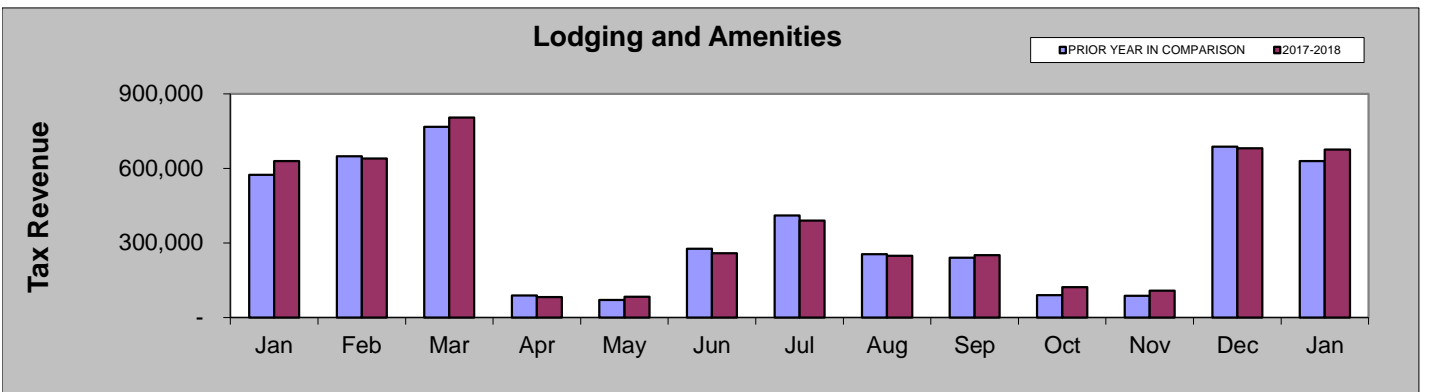
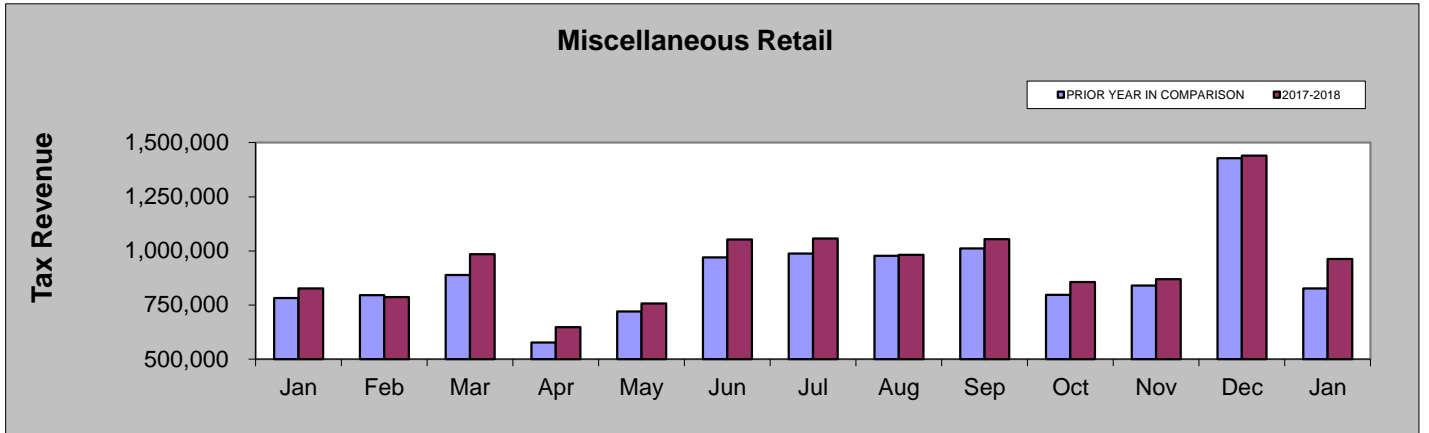
January 2017 - January 2018

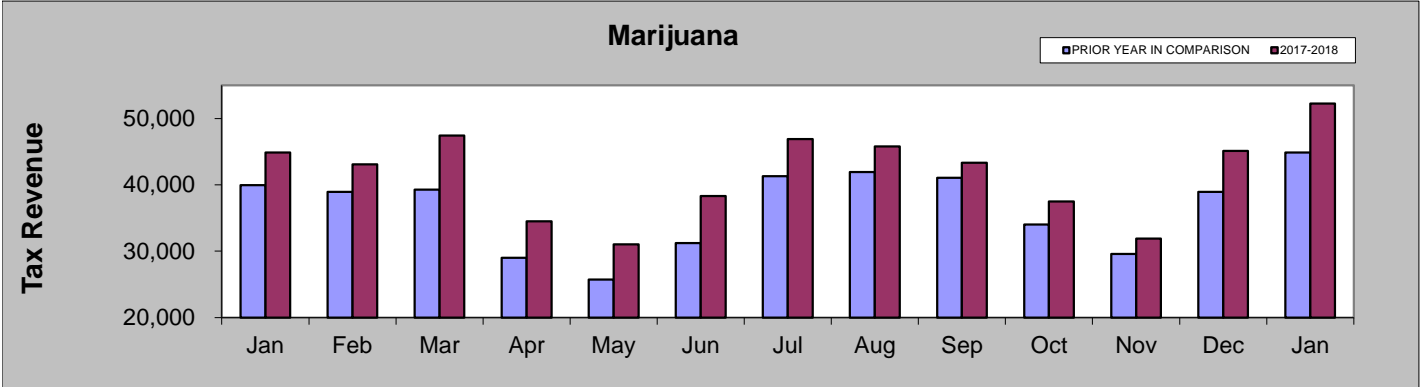
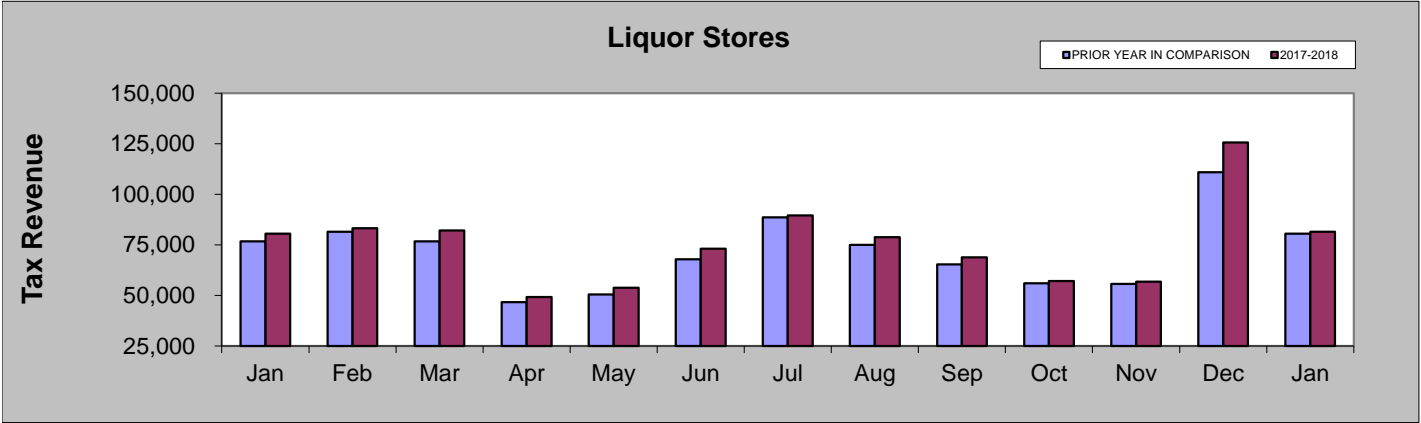
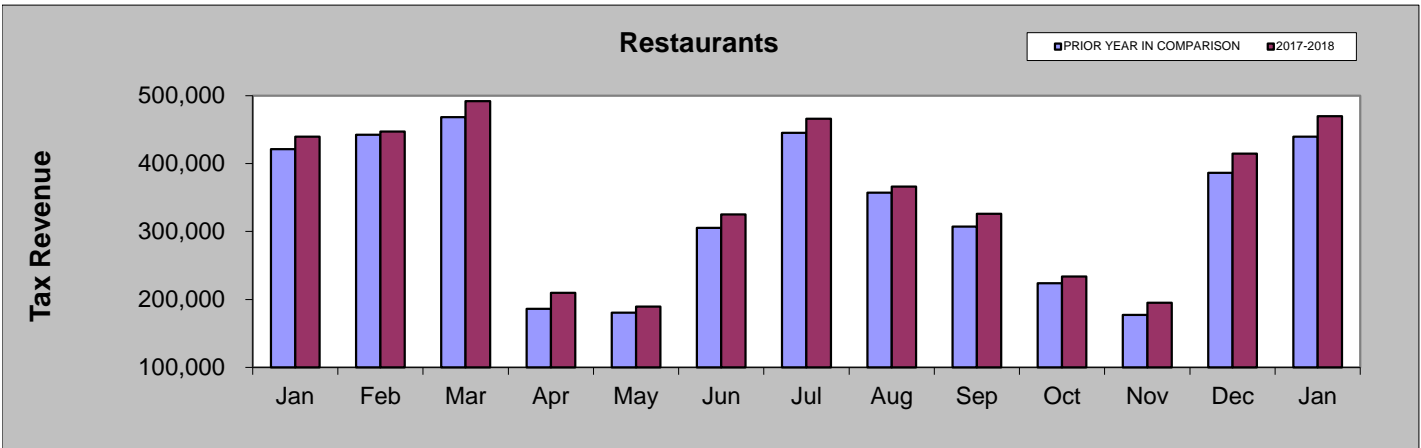
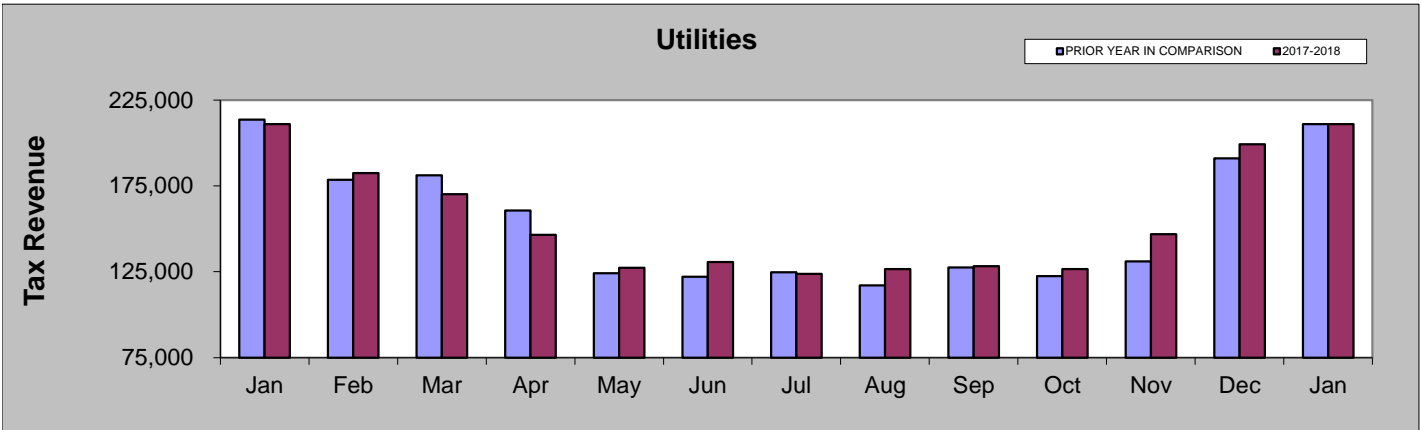


	Jan-17	Feb-17	Mar-17	Apr-17	May-17	Jun-17	Jul-17	Aug-17	Sep-17	Oct-17	Nov-17	Dec-17	Jan-18
Marijuana	44,878	43,110	47,454	34,510	31,021	38,304	46,910	45,817	43,327	37,495	31,913	45,146	52,255
Liquor Stores	80,551	83,172	82,179	49,185	53,847	73,163	89,541	78,774	68,892	57,191	56,771	125,660	81,482
Restaurants	439,459	447,186	491,868	209,780	189,651	325,368	466,212	365,998	326,063	234,045	195,335	414,829	470,029
Utilities	211,109	182,602	170,159	146,582	127,395	130,637	123,752	126,523	128,255	126,553	146,984	199,303	211,049
Sporting Goods	199,765	192,059	223,451	49,228	38,431	71,810	88,270	92,697	71,883	60,651	54,083	245,694	190,311
Lodging & Amenities	628,488	639,285	804,204	81,696	83,054	258,158	389,856	247,759	249,969	121,391	107,146	680,060	675,462
Miscellaneous Retail	826,263	786,210	984,522	647,137	757,116	1,053,393	1,056,922	982,089	1,054,837	856,684	869,809	1,440,123	961,902

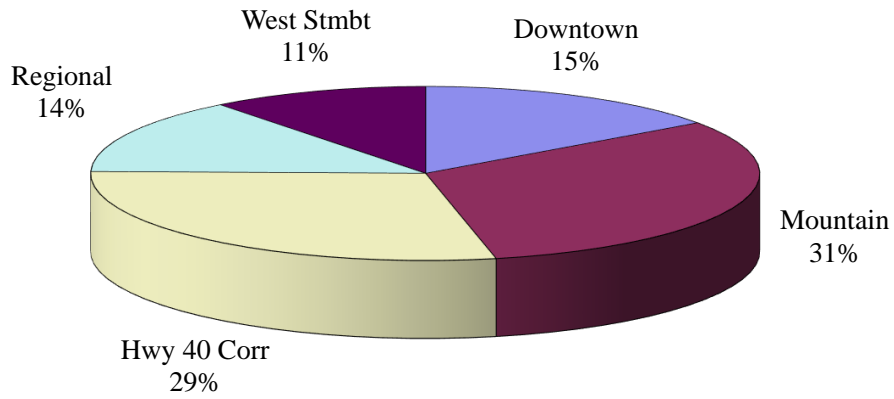
JANUARY COMPARISON BY CATEGORY

	2018	2017	% change
Miscellaneous Retail	\$961,902	\$826,263	16.42%
Lodging and Amenities	\$675,462	\$628,488	7.47%
Sporting Goods	\$190,311	\$199,765	-4.73%
Utilities	\$211,049	\$211,109	-0.03%
Restaurants	\$470,029	\$439,459	6.96%
Liquor Stores	\$81,482	\$80,551	1.16%
Marijuana	\$52,255	\$44,878	16.44%

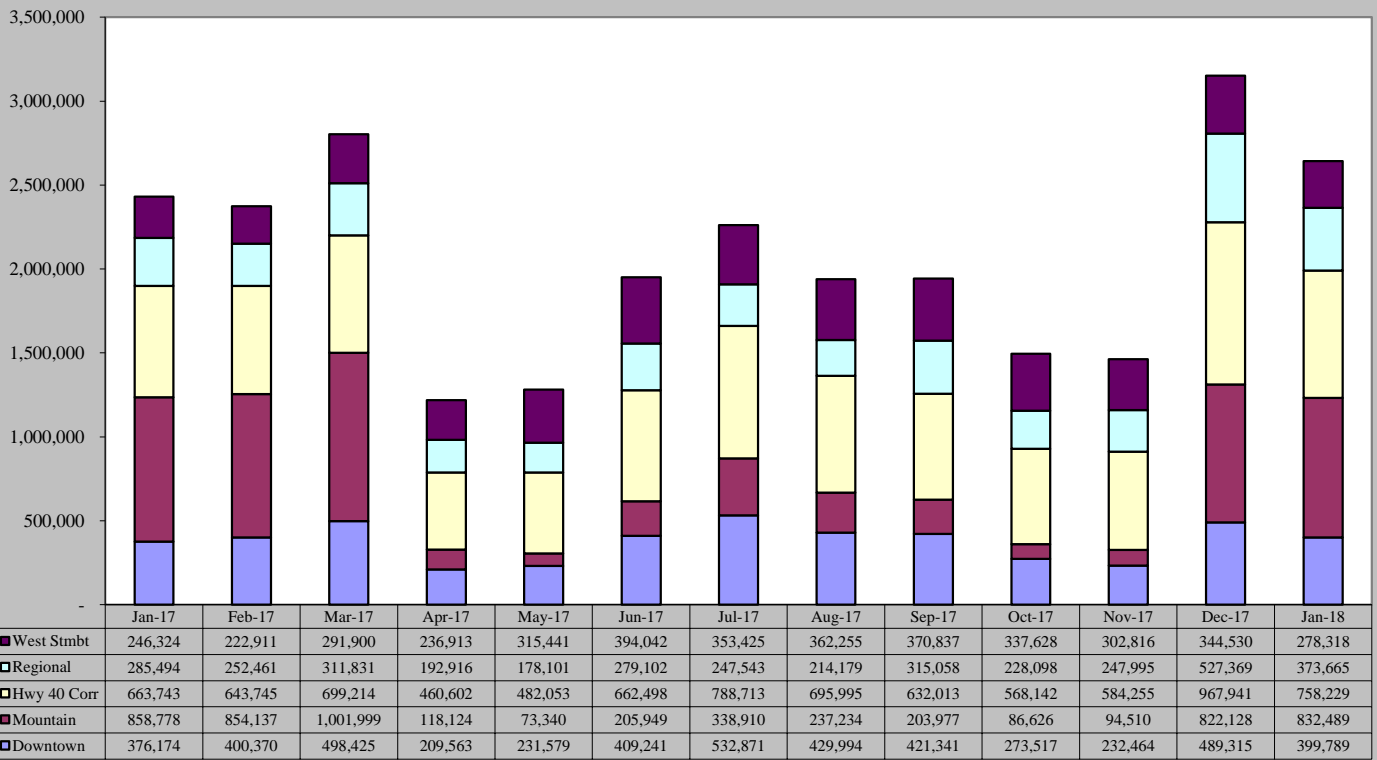




January 2018 Sales Tax By Area

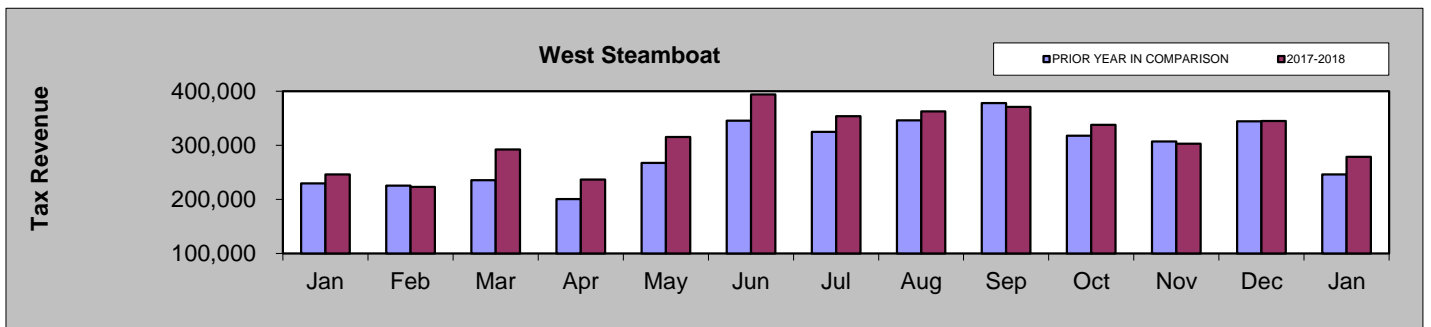
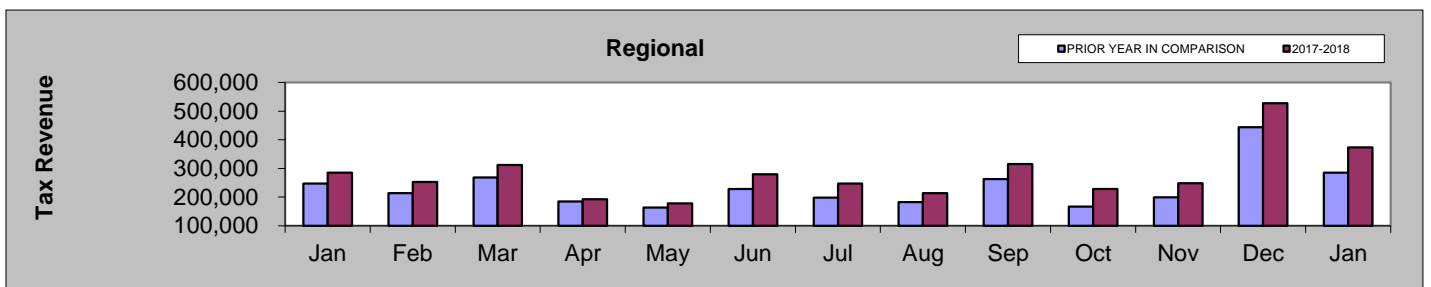
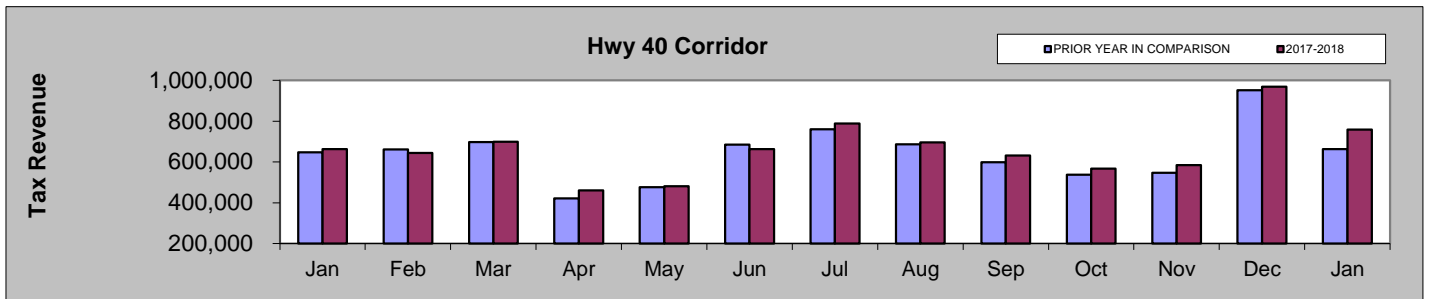
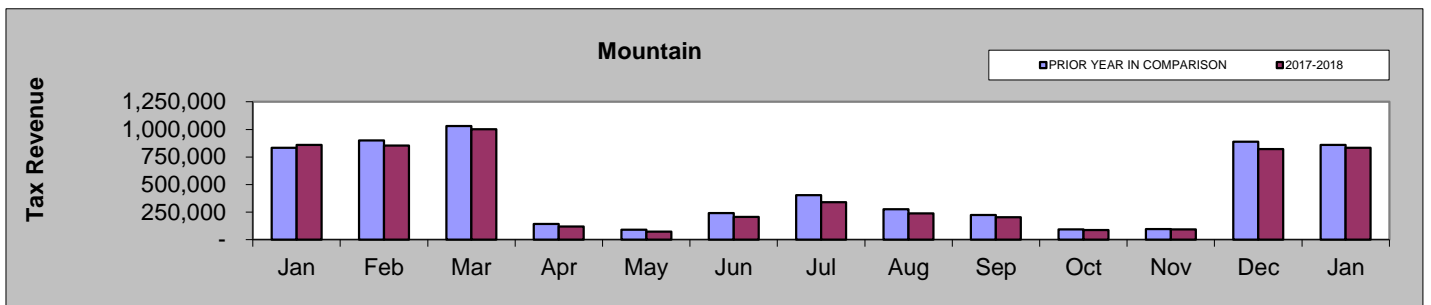
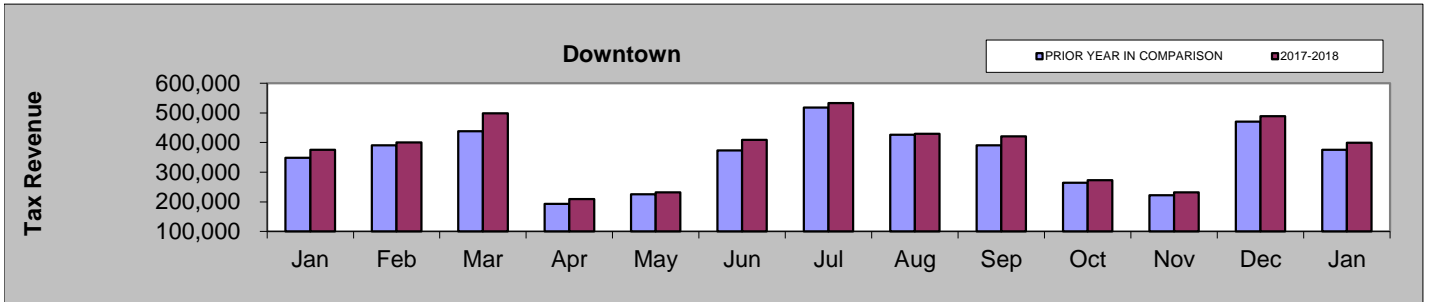


January 2017 - January 2018



JANUARY COMPARISON BY AREA

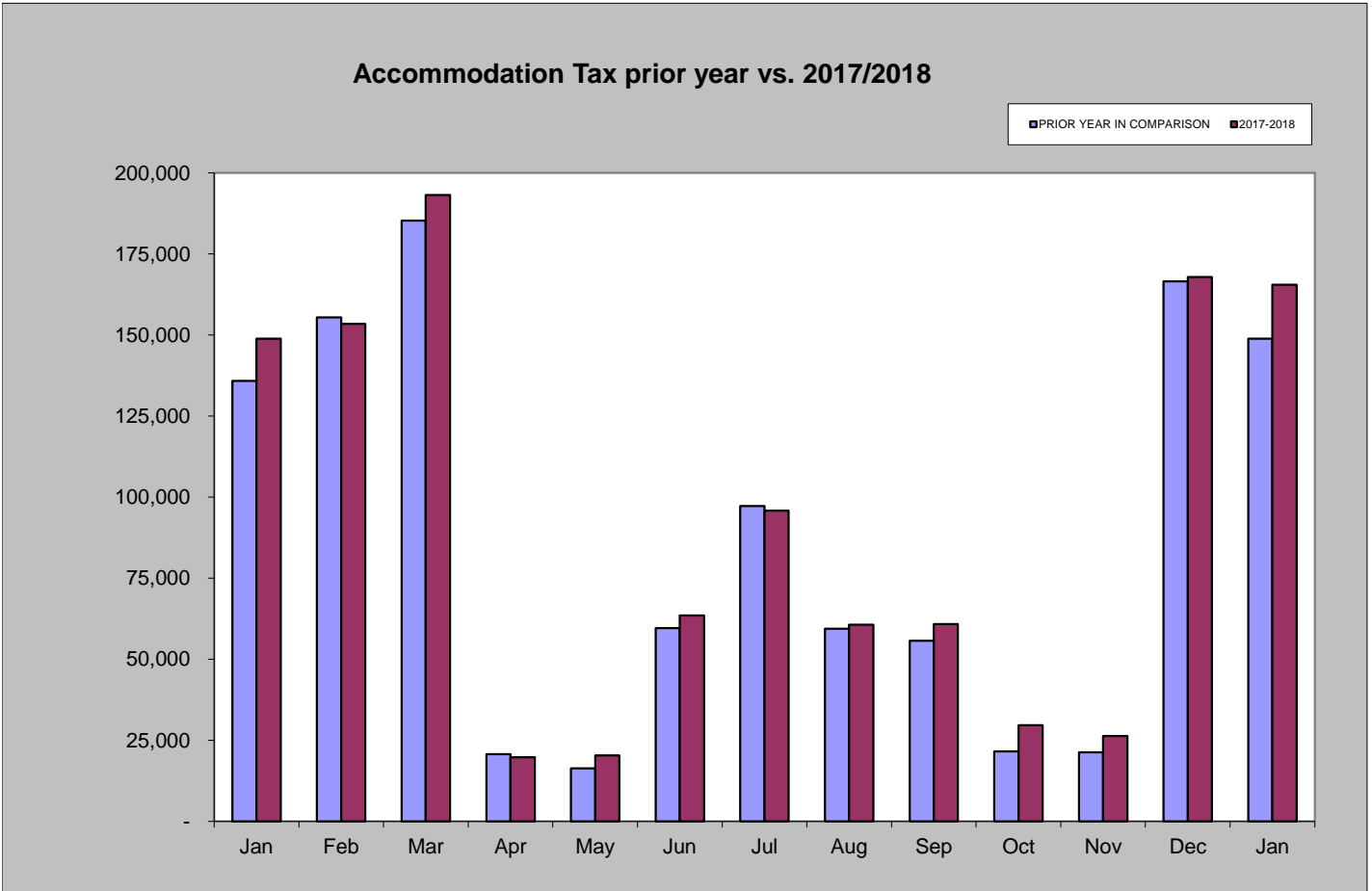
Area	2018	2017	% change
Downtown	\$399,789	\$376,174	6.28%
Mountain	\$832,489	\$858,778	-3.06%
Hwy 40 Corridor	\$758,229	\$663,743	14.24%
Regional	\$373,665	\$285,494	30.88%
West Steamboat	\$278,318	\$246,324	12.99%



Accommodation Tax

January 2018 accommodation tax collections increased by 11.23% compared to January 2017.

Accommodation Tax January 2018	Accommodation Tax January 2017	% increase/decrease over last January
\$165,522	\$148,808	11.23%

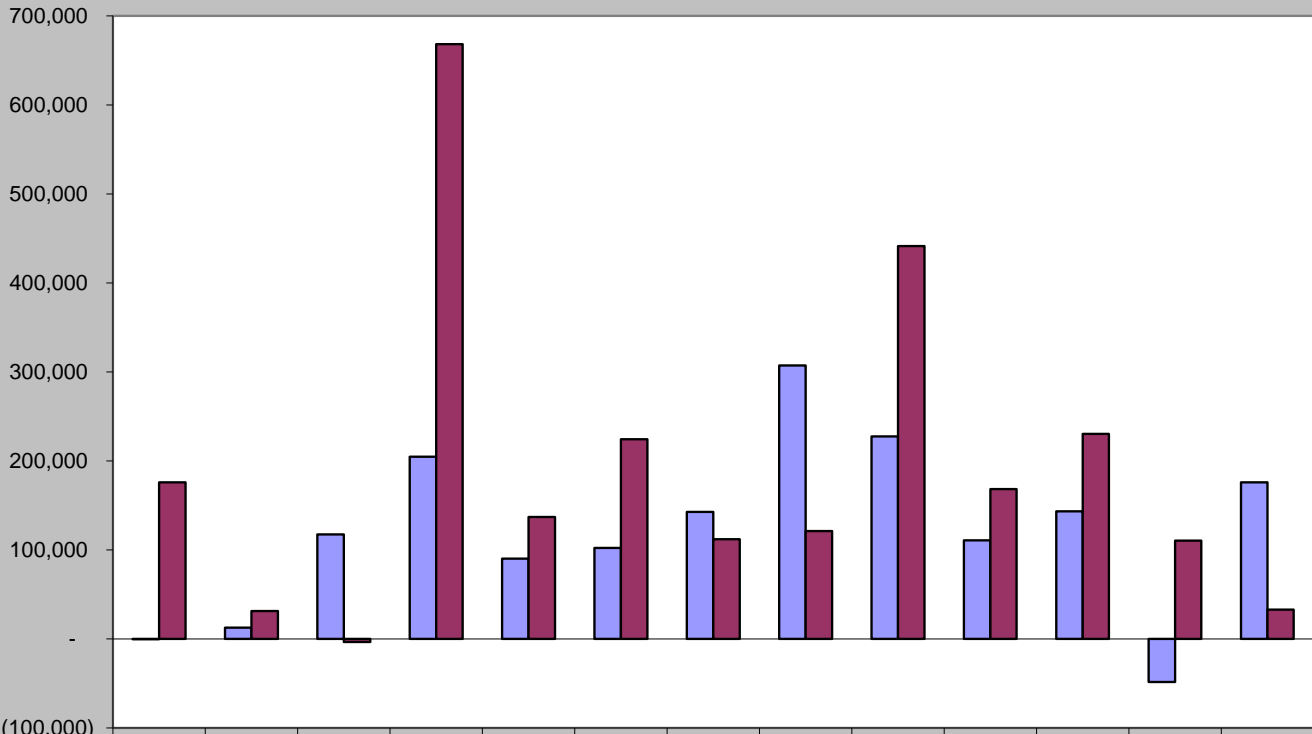


Building Use Tax

January 2018 building use tax collections were 81% less than January 2017.

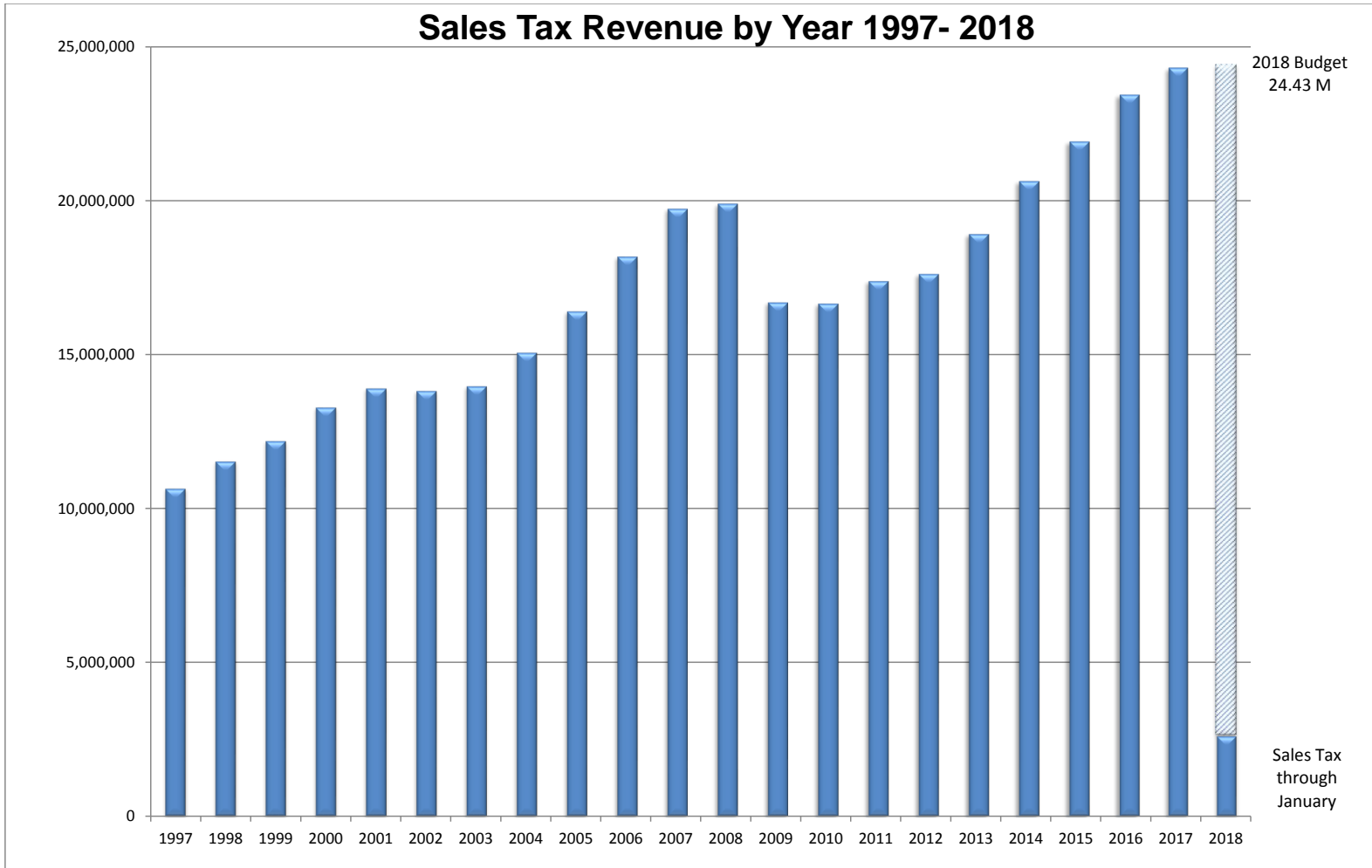
Building Use Tax January 2018	Building Use Tax January 2017	% increase/decrease over last January
\$32,982	\$175,816	-81%

Building Use Tax - prior year vs. 2017/2018



	Jan	Feb	Mar	Apr	May	Jun	Jul	Aug	Sep	Oct	Nov	Dec	Jan
■ PRIOR YEAR	(31)	12,806	117,536	204,881	90,127	102,180	142,890	307,375	227,399	110,845	143,485	(48,275)	175,816
■ 2017-2018	175,816	31,450	(3,429)	668,139	137,087	224,435	112,170	121,198	441,507	168,434	230,415	110,528	32,982

Sales Tax Revenue by Year 1997- 2018



Totals by Year	
1997	\$ 10,672,320
1998	\$ 11,559,068
1999	\$ 12,218,807
2000	\$ 13,304,983
2001	\$ 13,921,749
2002	\$ 13,841,283
2003	\$ 13,994,753
2004	\$ 15,079,016
2005	\$ 16,415,430
2006	\$ 18,192,298
2007	\$ 19,743,507
2008	\$ 19,904,293
2009	\$ 16,710,291
2010	\$ 16,669,735
2011	\$ 17,398,312
2012	\$ 17,632,019
2013	\$ 18,922,955
2014	\$ 20,635,678
2015	\$ 21,920,371
2016	\$ 23,438,573
2017	\$ 24,308,650
* 2018	\$ 2,642,490

* 2018 total is year-to-date through January