



## Weekly Construction Update August 14-18, 2017

### Highlights & Closures

- Pahwintah Street **CLOSED** North Of Crawford & 8<sup>th</sup> St. Intersection - August 14-15
- Yampa River Core Trail Sees **CLOSURES** Between 12<sup>th</sup> Street And Ambulance Barn
- 10<sup>th</sup> & Yampa Street Parking Lot **CLOSED** For One Day For Restriping - August 14 or 15
- Elk River Road South Of US 40, Between US 40 (Lincoln Ave) And Curve Plaza Is **CLOSED**
- Roadway **CLOSURES** In Emerald Park Project Remain

### Pahwintah Street

Beginning Monday, August 14 and running through Tuesday, August 15, Pahwintah Street will be closed north of the intersection of 8<sup>th</sup> Street, Crawford Avenue and Pahwintah for the installation of a water main.

Yahmonite is recommended as alternative route during the two-day work project being completed by Native Excavating (970-879-6231).



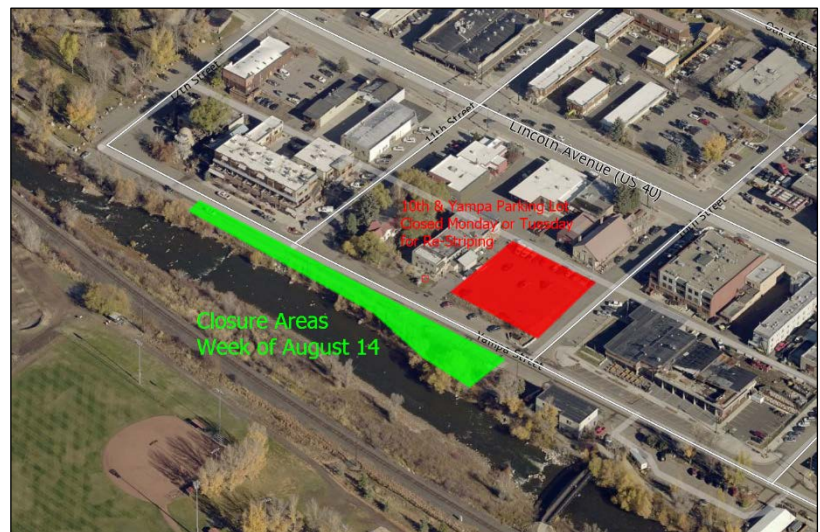
### Yampa Street

Work continued on the Yampa River Core Trail replacement between 11<sup>th</sup> and 12<sup>th</sup> Streets including a new concrete curb, gutter and splash band. Crews also finished the concrete bulb-out at the 10<sup>th</sup> & Yampa intersection.



Yampa Street Phase II efforts for the upcoming week of August 14-18 include:

- A section of the core trail will be partially closed as crews continue work moving toward the Ambulance Barn.
- 10<sup>th</sup> & Yampa parking lot will be restriped and will be closed for a period of one day – either on Monday (8/14) or Tuesday (8/15), weather dependent.
- The public parking lot at 9<sup>th</sup> & Yampa Streets will remain open in the coming weeks. However, this lot will close for a period of time in September – October for reconstruction.
  - Pedestrians will be safely routed around the work zones
  - All businesses will remain accessible at all times
  - This work is associated with the Yampa Street Phase II improvements which is expected to be completed by November 1, 2017



## Emerald Park Access & RR Crossing

Roadway closures for the new roadway approach to the south of the Hampton Inn went into effect last week and remain the same. Access to the Hampton Inn will be limited to the northern approach until the middle of September. Detour signs are in place to direct motorists accordingly. Work progress over the past week included asphalt milling, sidewalk and curb removal, grading and utility coordination.

For the week of August 14-18 the project includes:

- Site grading, roadway embankment, utility coordination and installation of drainage improvements.

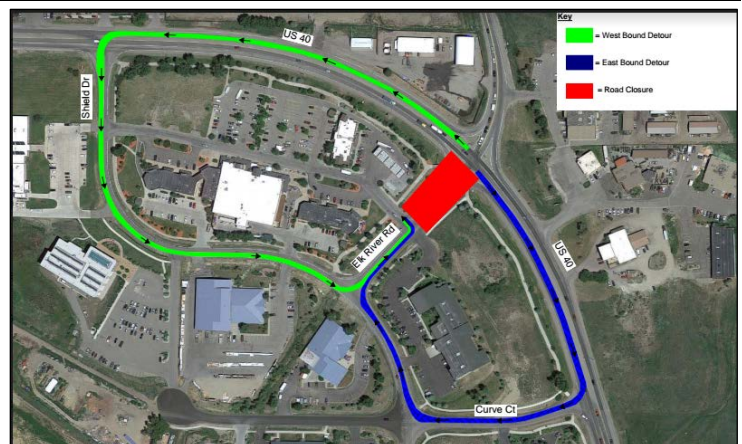


During the project, United Companies and the City of Steamboat Springs will recycle 877 tons of existing asphalt and 84 tons of existing concrete while incorporating 352 tons of new asphalt from recycled asphalt materials. A project hotline (970-871-8243) and email ([emeraldparkaccess@united-gj.com](mailto:emeraldparkaccess@united-gj.com)) has been set up for updates, notifications and information.

## US 40 Steamboat West

Implemented on Tuesday, August 1, and continuing 24 hours a day/7 days a week for approximately three weeks, the section of Elk River Road just south of US 40, between US 40 (Lincoln Ave) and Curve Plaza, remains CLOSED. Travelers need to use Shield Drive and Curve Court as a detour route.

The purpose of this full-time, temporary closure of Elk River Road is to enable CDOT contractor Flatiron Construction to complete full-depth reconstruction of the roadway. It will also reduce the duration of work in this area from six weeks to three weeks. Reconstruction of this portion will produce a dedicated left-turn lane, from northbound Elk River Road onto westbound US 40, and facilitate drainage improvements.



Those interested in staying up to date on the US 40 Steamboat West project and work schedule can do so by visiting the project web site at [bit.ly/us40-SW](http://bit.ly/us40-SW) (click on the ALERTS icon in the upper right corner, follow the instructions to sign up for "US 40 Steamboat Springs" under the Projects list). **Traffic speed through the work zone is 25 mph.** The public information line is 970-819-3558.



## Steamboat Springs Transit

Steamboat Springs Transit has relocated two transit stops. The Fairfield Inn bus stop is not available for passenger pick-up/drop-off in this location as buses will only be turning around in the driveway/US Highway 40. Passengers need to use the Steamboat Hotel or Holiday Inn bus stops due to hotel construction in this area.



On the west side of town, the Elk River Road bus stop has been temporarily moved to the east (towards downtown). Temporary bus stop signage with departure times is displayed at the stop. In addition, riders can find out when the next bus is expected to arrive with the RouteShout app available on iPhones and Androids as well as view buses in real-time via the web portal on the transit home page on the city's website.

## Businesses Open

Maintaining access to all businesses is a priority and all business remain open during construction. Signage and wayfinding continue to be installed during the required closures. Please respect all closures and use the designated detours and parking areas. Construction hours run from 7am-7pm Monday through Thursday and 7am-5pm on Friday.

Information on the downtown project is available at [www.diggindowntown.com](http://www.diggindowntown.com). Sign up to receive project updates at [steamboatsprings.net](http://steamboatsprings.net) (click on Notify Me, and select Downtown Improvement Project) or send an email request to [downtown@steamboatsprings.net](mailto:downtown@steamboatsprings.net).

###

### **Contact:**

#### **City of Steamboat Springs Projects**

Ben Beall, City Engineer, City of Steamboat Springs  
970-871-8293 | [bbeall@steamboatsprings.net](mailto:bbeall@steamboatsprings.net)

#### **US 40 Steamboat West**

Tracy Trulove, Region 3 Communications Manager  
CDOT | 970-366-2502 (c) | [tracy.trulove@state.co.us](mailto:tracy.trulove@state.co.us)